



Ligue des Bibliothèques Européennes de Recherche  
Association of European Research Libraries

# New Library Buildings in Europe

DOCUMENTATION 2016

Edited by Mahulena Svobodová

**LIBER**  
**LAG 2016**

**universitäts  
bibliothek  
freiburg**

NEW LIBRARY BUILDINGS IN EUROPE



Ligue des Bibliothèques Européennes de Recherche  
Association of European Research Libraries

Universitätsbibliothek Freiburg

# New Library Buildings in Europe

DOCUMENTATION 2016

Edited by Mahulena Svobodová

Freiburg

2016

**LIBER**  
**LAG 2016**

universitäts  
bibliothek  
freiburg

**Published on the occasion of the 18th seminar of the LIBER Architecture Group, held at the Freiburg University Library, Freiburg, 12 to 15 April 2016**

**LIBER Architecture Group**

Ulrich Niederer (chair) Zentral & Hochschulbibliothek, Luzern  
Alessandro Bertoni Università Ca' Foscari di Venezia  
Marie Françoise Bisbrouck Université Paris Sorbonne (Paris IV)  
Graham Bulpitt Kingston University, Kingston upon Thames  
Eva Dibuszová University of Chemistry and Technology, Prague  
Inken Feldsien-Sudhaus Technische Universität Hamburg, Harburg  
Martin Hallik University of Tartu  
Kira Stine Hansen The Royal Library, Copenhagen  
Karen Latimer Queen's University Belfast  
Liesbeth Mantel TU Delft Library  
Philippe Marcerou Inspection générale des bibliothèques, France  
Elmar Mittler (corresponding member) Niedersächsische Staats  
& Universitätsbibliothek, Goettingen  
Marie-Pierre Pausch-Antoine University of Luxembourg  
Sylvia van Peteghem Ghent University  
Martin Svoboda National Library of Technology, Prague  
Márta Virágos University of Debrecen

This work is protected by the Czech Act No. 121/2000 on Copyright and Rights Related to Copyright.

It is also available as an Open Access version through the homepage (<http://liber-lag.techlib.cz/>)

This work is licensed under the Creative Commons License 3.0 "by-nc-nd", allowing you to download, distribute and print the document in a few copies for private or educational use, given that the document stays unchanged and the creator is mentioned. Commercial use is not covered by the licence.



**Edited by** Mahulena Svobodová

**Cover Design & Page Layout** Lukáš Kalivoda

**Published by** Vysoká škola chemicko-technologická v Praze

Technická 5

166 28 Praha 6

Czech Republic

**ISBN 978-80-7080-961-7** (PDF)

**ISSN 2227-2593** (online)



<b>Foreword</b>	<b>7</b>
<b>Bibliothèque et Learning center des sciences et technologies.</b> Louvain-la-Neuve, Belgium	<b>9</b>
<b>Bibliothèque IUT – pharmacie.</b> Illkirch, France	<b>16</b>
<b>Universitätsbibliothek Freiburg.</b> Freiburg, Germany	<b>25</b>
<b>Hochschule Fulda – University of Applied Sciences.</b> Fulda, Germany	<b>35</b>
<b>Fachbibliothek Design Medien Information.</b> Hamburg, Germany	<b>43</b>
<b>Universitätsbibliothek Mainz, Bereichsbibliothek Georg Forster-Gebäude.</b> Mainz, Germany	<b>50</b>
<b>Universitätsbibliothek Mannheim.</b> Mannheim, Germany	<b>59</b>
<b>The Cregan Library, St. Patrick’s Campus.</b> Dublin, Ireland	<b>66</b>
<b>Umeå City Library.</b> Umeå, Sweden	<b>76</b>
<b>Kooperative Speicherbibliothek Schweiz (Cooperative Storage Facility Switzerland).</b> Büron, Switzerland	<b>86</b>
<b>Hochschulbibliothek, Haus Tista Murk.</b> Winterthur, Switzerland	<b>94</b>
<b>Stockwell Street Library.</b> Greenwich, United Kingdom	<b>104</b>
<b>The Laidlaw Library.</b> Leeds, United Kingdom	<b>115</b>
<b>Liverpool Central Library &amp; Archive.</b> Liverpool, United Kingdom	<b>123</b>
<b>Oxford Brookes University Headington Library.</b> Oxford, United Kingdom	<b>134</b>
<b>Questionnaire: Description of New University and Research Library Buildings in Europe</b>	<b>143</b>
<b>Questionnaire : sur les nouveaux batiments de bibliotheques universitaires et de recherche en Europe</b>	<b>147</b>

<b>Fragebogen: Neue Gebäude von Universitätsbibliotheken und Wissenschaftlichen Bibliotheken</b>	<b>151</b>
<b>Questionario: descrizione nuovi edifici di biblioteche universitarie e di ricerca in Europa</b>	<b>155</b>
<b>Cuestionario: descripción de bibliotecas de investigación y universitarias de reciente construcción en Europa</b>	<b>159</b>

# Foreword

## to the LIBER Architecture Group

### Documentation 2016

Once again, it is my special pleasure to introduce this documentation on behalf of the LIBER Architecture Group, a Forum within LIBER, the Association of European Research Libraries.

It collects information about library building projects across Europe. As in earlier surveys, a range of projects are presented including new buildings, renovations, refurbishments and extensions. Our aim is to provide librarians and architects with a wide variety of case studies and the concepts upon which they are based. We believe that people involved in building projects will be able to find here similar projects to their own, to gain new ideas, to establish professional contacts and to learn from each other.

For the twelfth time the LIBER Architecture Group is publishing a collection of case studies, and its publication coincides again with a seminar organized by the Group. This, the 18<sup>th</sup> seminar, is hosted by the University Library of Freiburg University, Germany. I would like to take this opportunity to thank Dr. Antje Kellersohn, Director, Dr. Sabine Gehrlein, Deputy Director of the University Library, and their colleagues for inviting us to come to Freiburg and thus for providing us not only with the opportunity to see a stunning new library building and learn about the underlying concept, but also to visit a fascinating city in Southern Germany!

The database 'Library Buildings in Europe' that the Czech National Library of Technology set up four years ago enables electronic access to information on all the projects that have been submitted since 2012. The projects are accessible either as single database entries or are organized in collections relating to the seminars in 2012, 2014 and now 2016. We decided, after much discussion, to cease publication of the printed version and to concentrate instead upon the electronic database which is more widely available to all. It is our intention to incorporate earlier material from the previous printed publications into the database. We are very grateful to Martin Svoboda and his colleagues of the Czech National Library of Technology in Prague for the database as well as to LIBER and its Executive Board for its support.

Ulrich Niederer  
Chair, LIBER Architecture Group  
February 2016





# Bibliothèque et Learning center des sciences et technologies. Louvain-la-Neuve, Belgium

## A General information

### a Name and address

- 1 university [Four faculties of the UCL are served by this Library: Sciences, Bioeng.-Agriculture, Polytechnical School, Architecture-Urbanism]
- 2 Bibliothèque et Learning center des sciences et technologies / Université catholique de Louvain (UCL)
- 3 Place L. Pasteur 2 Bte L4.02.01 – 1348 Louvain-la-Neuve (BELGIUM)
- 4 T 00-32-(0)10.47.21.75; E info-bst@uclouvain.be
- 5 Brodtkom, Frédéric
- 6 Brodtkom, Frédéric, E frederic.brodtkom@uclouvain.be; T 00-32-(0)10.47.21.84

### b Population served

- 7 All publics are free to come in the UCL libraries. UCL students and staff members have an automatic inscription
- 8 4,645 [FTE students of the LLN Campus in the four faculties served by the Library]
- 9 No distinction with those of the question 8.
- 10 595 [FTE staff members of the LLN Campus in the four faculties served by the Library]

### c The old/original building(s)

- 11 6,330 m<sup>2</sup> [All included]
- 12 450

- 13 19,500 m
- 14 4,400 m
- 15 10,300 m
- 16 10 [Staff students not included]
- 17 56 hours/week and 245 days/year

## B The new building

### a Architect(s)

- 18 Université catholique de Louvain – CEIU: Cellule d'études immobilières et urbaines
- 19 Le Paige, Michel; Deferière, Carole; Lienard, Céline
- 20 renovation [Renovation of a 6 levels building (1973) hosting laboratories. The former Library is become the University Museum (art, archeology, etc.)]

### b Aims of the new building

- 21 The new project aims to integrate the classical Library services and ressources and a new Learning center with facilities for teaching, research and social activities.

### c Special Features

- 22 The new Library is located in the University Campus of Louvain-la-Neuve close to the faculties deserved and student housing.
- 23 Renovation project, the former building has been entirely open and refurbished: strengthening structures, new glass façades and lightening, new locals, new furnitures, access, tc.

## C Technical information

### a Floor area (24–35)

- 24 7,172 m<sup>2</sup> [Including 303 m<sup>2</sup> of new closed stores in the neighboring building.]

Divided into

- 25 3,770 m<sup>2</sup> [On 5 levels open to publics, including large open spaces, special rooms and collections.]

Special rooms for (26–29)

- 26 64 sq. feet [2 rooms of 8-pl. and 2 rooms of 4–5 pl. equipped with flat screen, 1 visioconference room of 18 pl.]
- 27 72 m<sup>2</sup> [Fully equipped with 19 PCs and data projector, 15 more in various places of the Library and Learning center.]
- 28 197 m<sup>2</sup> [Maps collection and special collection about Congo.]
- 29 288 m<sup>2</sup> [6 seminar rooms of 8–10 pl. for teachers and staff, 19 group works rooms of 4–5 pl. for students.]

Special activities (30–32)

- 30 172 m<sup>2</sup> [Exhibition area dedicated to posters (seminar of research, activities for students) and cultural activities.]
- 31 205 m<sup>2</sup> [3 rooms of 41 pl. with data projector.]
- 32 70 m<sup>2</sup> [With 22 high chairs and armchairs, kitchen corners, beverage distributors.]
- 33 247 m<sup>2</sup>
- 34 1,123 m<sup>2</sup> [Including 303 m<sup>2</sup> of new closed stores in the neighboring building.]
- 35 964 m<sup>2</sup>
- 36 6 levels with 5 in public access, excellent WIFI coverage at all levels
- 37 719 [All seats for users, armchairs (117), high chairs included.]

Divided into

- 38 42 [Rooms with flat screen/audio facilities and visioconference room.]
- 39 29 [IT rooms and PC dispatched in the Library and Learning center.]
- 40 247 [In seminar rooms, class rooms and group works rooms.]
- 41 401

**b Total potential capacity of shelving**

42 13,210 m

Including

43 7,580 m

44 5,620 m

45

46 10 m

47 The map collection occupies special furnitures on 80 m<sup>2</sup>

48 10

### c Mechanical features

- 49 The Library is equipped with a double-flow system ad free-cooling.
- 50 Static heating connected to the urban network (cogeneration).
- 51 LED lighting in hallways and reception desk.
- 52 Acoustic panels (administration, visioconference room).
- 53 One existing lift given to new standards.
- 54 —
- 55 Theft gantries ans access control.
- 56 Centralized management of heating, flow and solar input.
- 57 Fully connected with WIFI and computer sockets coupling to the optical fiber of the University network.
- 58 New double glazing, etc.

## D Schedule of the building process

- 59 July 2012
- 60 July 2012 – December 2012
- 61 Public market > Tender in December 2012
- 62 April 2013: asbestos removal – September 2013: work begins
- 63 12 months
- 64 Summer 2014
- 65 September 23rd 2014

## E Costs (including taxes)

- 66 Land and building owned by the University.
- 67 8,750,000 EUR
- 68 285,000 EUR
- 69 Architects / Engineers of the University.
- 70 9,035,000 EUR

71

72 University (private) funding.



Facade (West) new BST © Damien Dumoulin (UCL-AREC)



South view of the new BST © Damien Dumoulin (UCL-AREC)

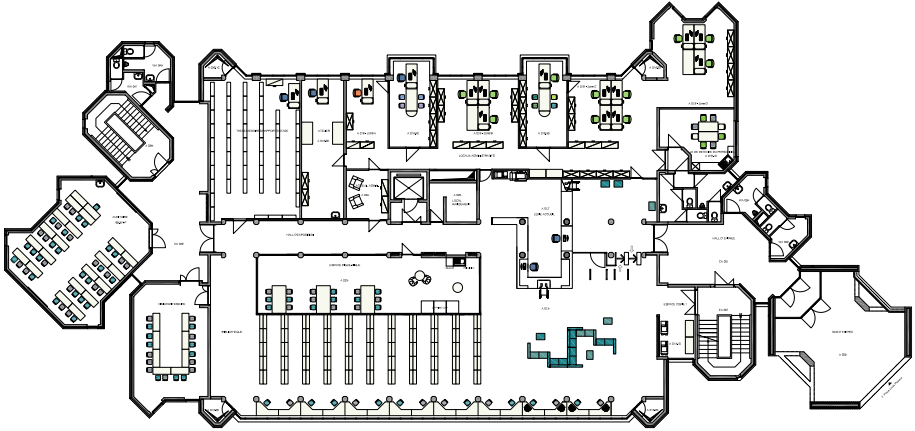
Bibliothèque et Learning center des sciences et technologies. Louvain-la-Neuve, Belgium



Level 1 of the new BST © Denis Vasilov (UCL-AREC)



Level 1 of the new BST – multimodal space © Frédéric Brodtkom (UCL-BST)



Level 0 with reception desk, cafeteria, administration, etc. © Julie Scheurs (UCL-ADPI)



Level 1 with social spaces, studying tables, etc. © Julie Scheurs (UCL-ADPI)

# Bibliothèque IUT – pharmacie. Illkirch, France

## A General information

### a Name and address

- 1 university
- 2 Bibliothèque IUT – pharmacie /  
Service Commun de Documentation – Université de Strasbourg
- 3 74 A ROUTE DU RHIN – 67400 ILLKIRCH CEDEX
- 4 T +0033 68 85 89 07 ; E scd-bib-iut-pharma@unistra.fr
- 5 Madame Dominique Wolf
- 6 Philippe Metz and Marion Bernard-Schweitzer,  
E marion.bernard@unistra.fr

### b Population served

- 7 1,500
- 8 3,000
- 9
- 10 400

### c The old/original building(s)

- 11 1,087 m<sup>2</sup>
- 12 194
- 13 750 m
- 14 750 m
- 15 none
- 16 4 [4.10 full time equivalent (6 agents)]



17 49 hours per week, 5 days per week

## B The new building

### a Architect(s)

18 Les Architectes SA

19

20 extension [Extension (construction of a stage)]

### b Aims of the new building

21 The main objective of the project was to bring together two libraries: the library of the faculty of pharmacy (located in a new building built in 2007) and the library of the IUT Robert Schuman (located in the IUT), in order to get more space for readers and librarians, more group study and more services.

### c Special Features

22 The library is located on the Illkirch campus, accessible from the center of Strasbourg by tramway (about 20 min). On this campus are also located the faculty of pharmacy, the Robert Schuman University Institute of Technology (IUT Robert Schuman), the Telecom Physique Strasbourg school and the Strasbourg Graduate School of Biotechnology (ESBS). The Illkirch campus provides its students with university residence and a university restaurant.

23 The first level of the library was built in 2006, and the library of pharmacy is located here from this date; it includes two reading rooms, two offices, 3 group study rooms, a small cafeteria. The extension, planned from the start, had these objectives:

- › The restructuring of a part of the ground floor, with the creation of a training room and a press room, the enlargement of the cafeteria and the creation of a room for the staff;
- › The construction of a central main staircase giving access to the floor;
- › The creation of a reading room and 9 group study on the first floor;
- › The installation of 4 offices for the staff.

The building consists of a reinforced concrete structure covered with concrete; on the South, the East and the West, vertical wooden blades cover the walls.

## C Technical information

### a Floor area (24–35)

24 2,462 m<sup>2</sup>

Divided into

25 1,281 m<sup>2</sup>

Special rooms for (26–29)

26

27

28

29 185 m<sup>2</sup>

Special activities (30–32)

30

31

32 31 m<sup>2</sup>

33 202 m<sup>2</sup>

34

35 763 m<sup>2</sup>

36 Two public levels, a landscaped patio on the ground floor.

37 423

Divided into

38

39 20

40 90

41 313

### b Total potential capacity of shelving

42 1,400 m

Including

43 1,400 m

- 44 none
- 45
- 46
- 47
- 48 7 [7.2 full time equivalent (9 agents)]

### c Mechanical features

- 49 Ventilation, no air conditioning
- 50 Collective heating (natural gas). Heating by the ground (part of the ground floor, and first floor) or by radiators.
- 51 The light is appropriate for each space and can be activated by a detector of presence.
- 52 Acoustic ceiling in reading rooms, to muffle the possible noise pollutions and create an atmosphere convenient for work.
- 53 One lift, reserved to library's agent and handicapped.
- 54 none
- 55 RFID
- 56
- 57
- 58

## D Schedule of the building process

- 59 September 2008
- 60 March 2010
- 61
- 62 April 2013
- 63 August 2015
- 64
- 65 September, 16th 2015

## E Costs (including taxes)

66

67 1,450,000 EUR

68

69

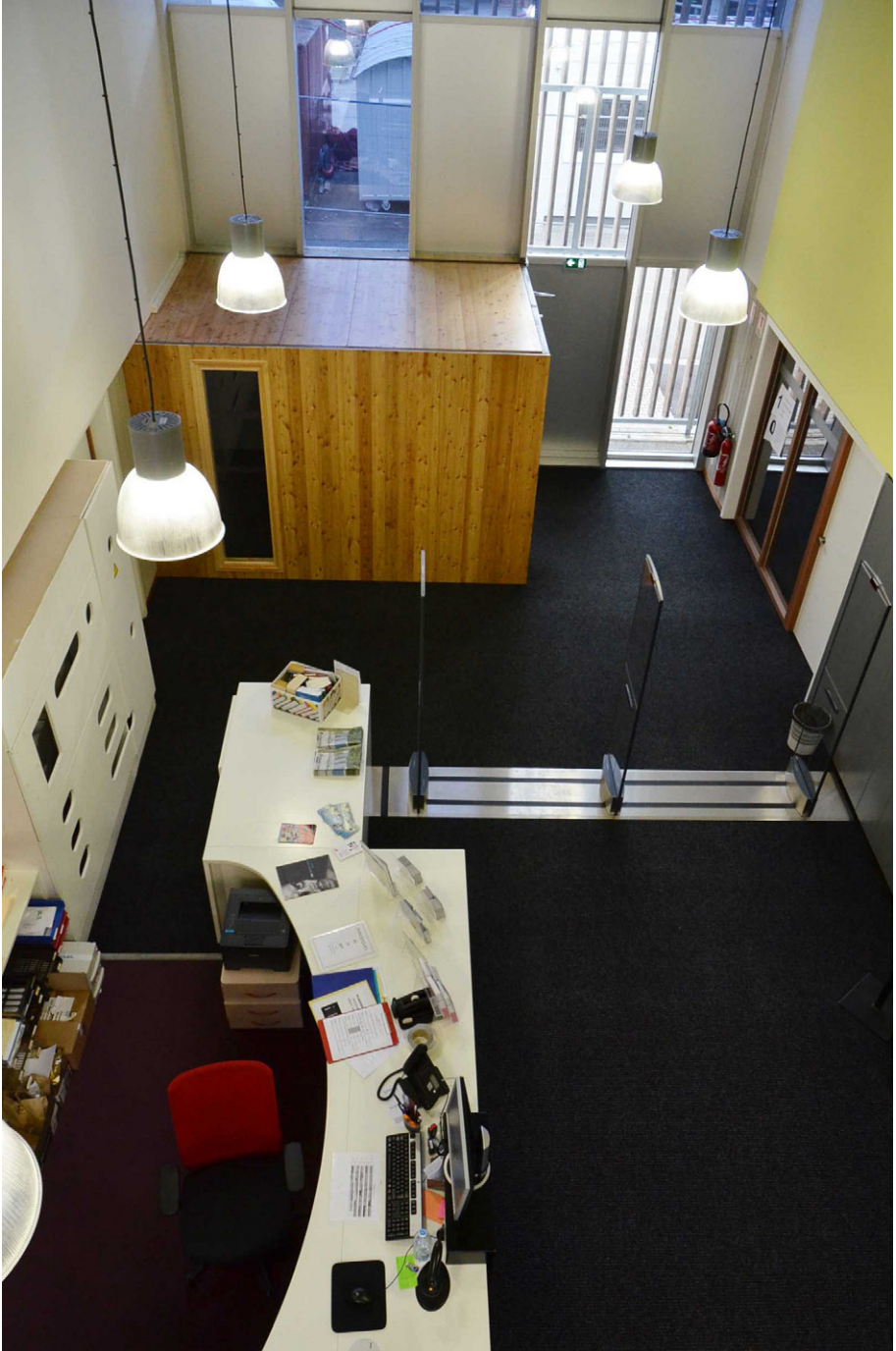
70 2,500,000 EUR

71

72 Cofinancing by French Ministry for Higher Education and Research (MESR) and the Eurometropolis of Strasbourg



Library from the outside © Philippe Metz



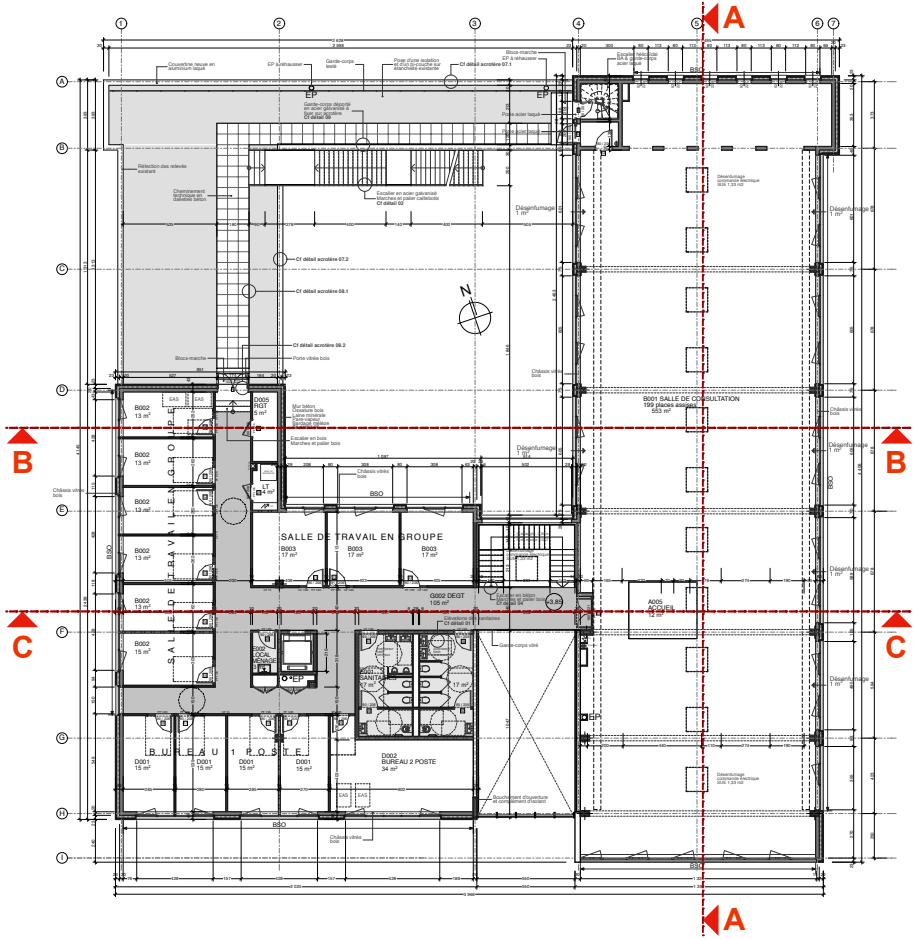
Library hall © Philippe Metz



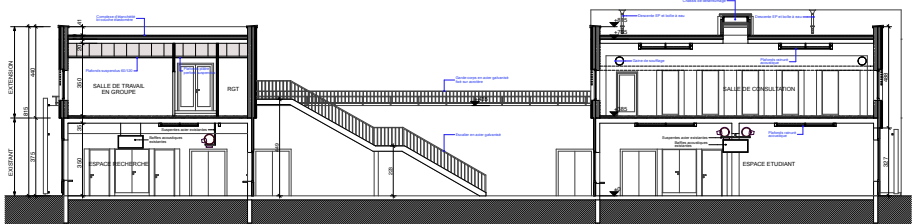
First Floor reading room © Philippe Metz



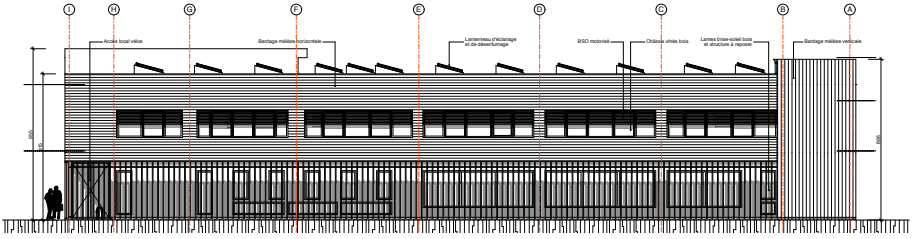
Group Study © Philippe Metz



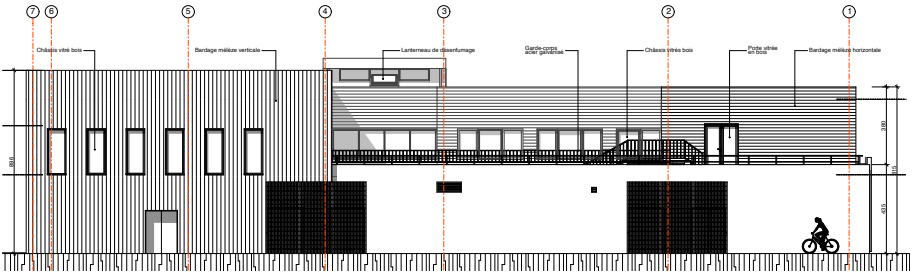
First floor © Les Architectes SA



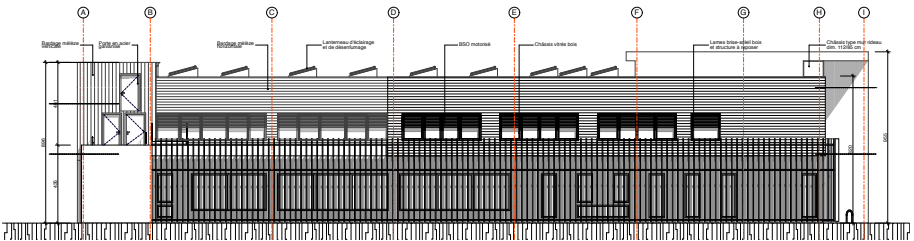
Cross Section BB © Les Architectes SA



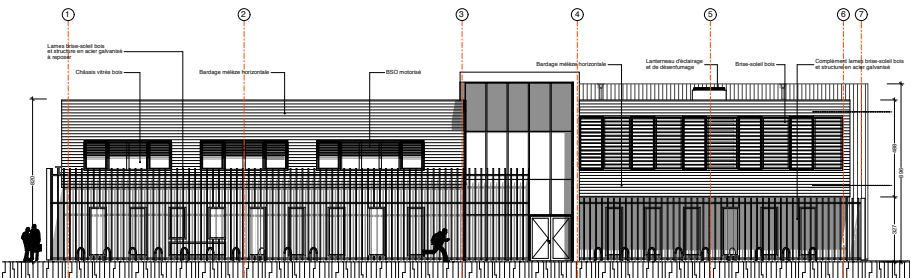
East Elevation © Les Architectes SA



North Elevation © Les Architectes SA



West Elevation © Les Architectes SA



South Elevation © Les Architectes SA





# Universitätsbibliothek Freiburg. Freiburg, Germany

## A General information

### a Name and address

- 1 university
- 2 Universitätsbibliothek Freiburg / Albert-Ludwigs-Universität Freiburg
- 3 Platz der Universität 2, D-79098 Freiburg
- 4 T +761 203 3900, F +49 761 203 3987; E [direktion@ub.uni-freiburg.de](mailto:direktion@ub.uni-freiburg.de)
- 5 Dr. Antje Kellersohn
- 6 Dr. Sabine Gehrlein, E [sabine.gehrlein@ub.uni-freiburg.de](mailto:sabine.gehrlein@ub.uni-freiburg.de);  
T +49 761 203 3906

### b Population served

- 7 25,000
- 8 25,000
- 9
- 10 6,760

### c The old/original building(s)

- 11 20,811 m<sup>2</sup> [main usable area, old building of 1978]
- 12 1,020
- 13 3,410,000 volumes
- 14 410,000 volumes
- 15 3,000,000 volumes

- 16 150
- 17 75 hours per week, 301 days per year

## B The new building

### a Architect(s)

- 18 Degelo Architekten, Itten + Brechbühl, Basel, [www.degelo.net](http://www.degelo.net)
- 19 Herr Heinrich Degelo
- 20 new building [Renovation and new building rolled into one!]

### b Aims of the new building

- 21 The number of study spaces available was to be vastly increased, and a much more diversified and differentiated study and research environment planned. Quiet study spaces in the reading rooms and the access to the open stacks on the one hand were to be kept strictly separate from the necessarily louder and livelier group work areas and learning lounges (called “Parlatorium”) on the other.

The new building was also required to be capable of operating 24/7 and to provide an RFID-driven self-service infrastructure backed by a corresponding media transport system. At the same time, the area for the open stacks was to be increased by the conversion of the erstwhile underground car park. Last but not least, the building had to provide enough capacity to absorb one of the larger faculty libraries.

### c Special Features

- 22 The university library is located at the very heart of the city, in immediate proximity to the university’s humanities buildings.
- 23 The building’s key characteristic is its permeability between the – for the most part – freely accessible open-stacks and the non-circulating collection on the floors above. These also offer more than 1,700 study spaces for the patrons: from traditional quiet areas to modern learning lounges.

From the outset, the design aimed at allowing the library to offer 24/7 service and to provide an RFID-driven self-service infrastructure, backed by a corresponding media transport system.

## C Technical information

### a Floor area (24–35)

24 30,600 m<sup>2</sup>

Divided into

25 12,700 m<sup>2</sup> [open access services: all areas, except for closed stacks and the library administration area]

Special rooms for (26–29)

26 777 m<sup>2</sup> [Media center with work-places for using, creating and editing media, audio and video studios and a cross media editorial team]

27 512 m<sup>2</sup> [2 seminar rooms (computers, laptops), catalogue computers, 2 PC pools, lendable tablet PC, iMacs and Macs (Media center), presentation screens]

28 255 m<sup>2</sup> [Special reading room for historical collections and other collections worthy of protection]

29 272 m<sup>2</sup> [2 seminar rooms, 2 seminar rooms in Media Center]

Special activities (30–32)

30 exhibition spaces in parlatory

31 277 m<sup>2</sup> [multi-purpose hall for exhibitions and events, 200 seats]

32 503 m<sup>2</sup> [The cafeteria in the foyer is part of the library's using concept („learning lounge“), in summer time additional outdoor service]

33 4,050 m<sup>2</sup> [instead of individual offices predominantly open space office environments]

34 11,580 m<sup>2</sup> [2 closed access stacks (basement floors 2 and 3)]

35 9,930 m<sup>2</sup>

36 9 floors (3 basement floors, 7 public floors)

37 1,700

Divided into

38 30

39 46

40 4

41 1,700

**b Total potential capacity of shelving**

42 4,430,000 volumes

Including

43 230,000 volumes

44 3,500,000 volumes

45 not yet identified, partially included in 44, additional compaction is planned

46

47

48 163

**c Mechanical features**

49 mechanical aeration with pre-tempering of the air flow by using spring water and steam. Air supply: cavity floor, ventilation flaps

50 connection to a central steam line

51 reading areas: energysaving LED system with automatic off-switch

52 sound-absorbing system in reading areas and open space offices: specific materials and hole panels at ceilings and walls

53 6 passenger elevators and 1 extra-large service elevator

54 2 straight-line elevators (Gilgen), serving all floors

55 based on RFID

56 central building control system

57 Cat-7

58

**D Schedule of the building process**

59 2003

60 2006

61 2006–2008

62 10/2008

- 63 2008–2015
- 64 2015
- 65 21st of July 2015

## E Costs (including taxes)

- 66
- 67 52,000,000 EUR
- 68 not yet determined
- 69
- 70 52,000,000 EUR
- 71
- 72

## F Publications & Awards

Das andere Freiburg: Universitätsbibliothek und UWC Robert Bosch College  
In: Bauwelt. 46.2015, S. 16–27

Kellersohn, Antje: Alle sollen mitreden! Die Einbeziehung von Nutzern, Beschäftigten und der Öffentlichkeit bei der Neubausanierung der Universitätsbibliothek Freiburg

In: Zeitschrift für Bibliothekswesen und Bibliographie 2013; 60 (3/4): 131–139. (Download: [http://zs.thulb.uni-jena.de/servlets/MCRFileNodeServlet/jportal\\_derivate\\_00233485/j13-h3-4-auf-3.pdf](http://zs.thulb.uni-jena.de/servlets/MCRFileNodeServlet/jportal_derivate_00233485/j13-h3-4-auf-3.pdf))

Kellersohn, Antje, Ruppert, Hans Adolf: Neben und unter der Baustelle ... 24/7 Service auf dem Weg zur UB Freiburg 2013

In: Hauke, Petra; Werner, Klaus Ulrich (Hrsg.): Bibliotheken heute! Best Practice in Planung, Bau und Ausstattung. Bad Honnef: Bock + Herchen, 2011

Kellersohn, Antje: Die neue Universitätsbibliothek Freiburg. Ein Bericht von der Baustelle

In: BIT online: Zeitschrift für Bibliothek, Information und Technologie mit aktueller Internet Präsenz, 2010; 13 (4): 430–433. (Download: <http://www.b-i-t-online.de>)

Kellersohn, Antje, Sühl-Strohmenger, Wilfried: Ein geschliffener Diamant für Freiburgs Innenstadt

In: BuB: Forum Bibliothek und Information, 2009; 61 (10): 699–703

Kellersohn, Antje, Sühl-Strohmenger, Wilfried: Die 24 Stunden Bibliothek an 7 Tagen in der Woche. Jetzt auch in der UB Freiburg

In: BIT online: Zeitschrift für Bibliothek, Information und Technologie mit aktueller Internet Präsenz, 2009; 12 (2): 174–175



Exterior view daytime © Sebastian Bender, Universitätsbibliothek Freiburg



Exterior view by night © Sebastian Bender, Universitätsbibliothek Freiburg



Reading room © Sebastian Bender, Universitätsbibliothek Freiburg

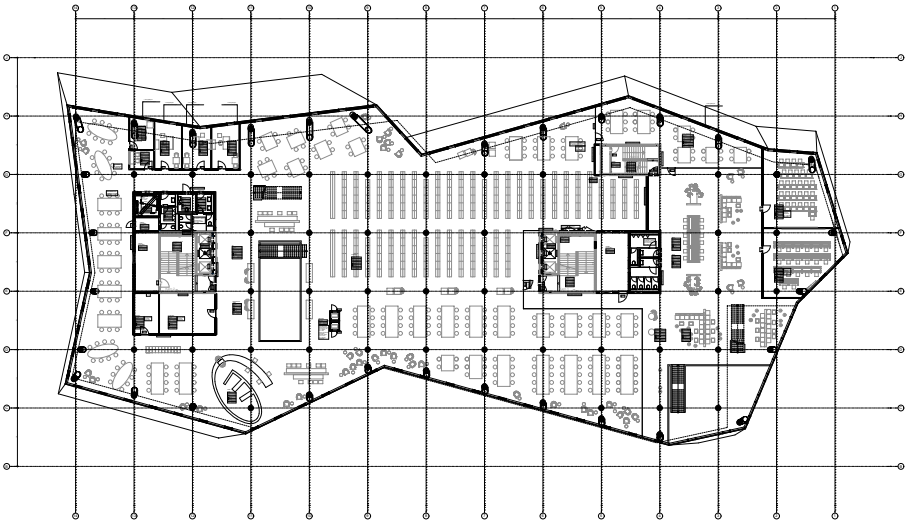


Stairway reading rooms © Sebastian Bender, Universitätsbibliothek Freiburg

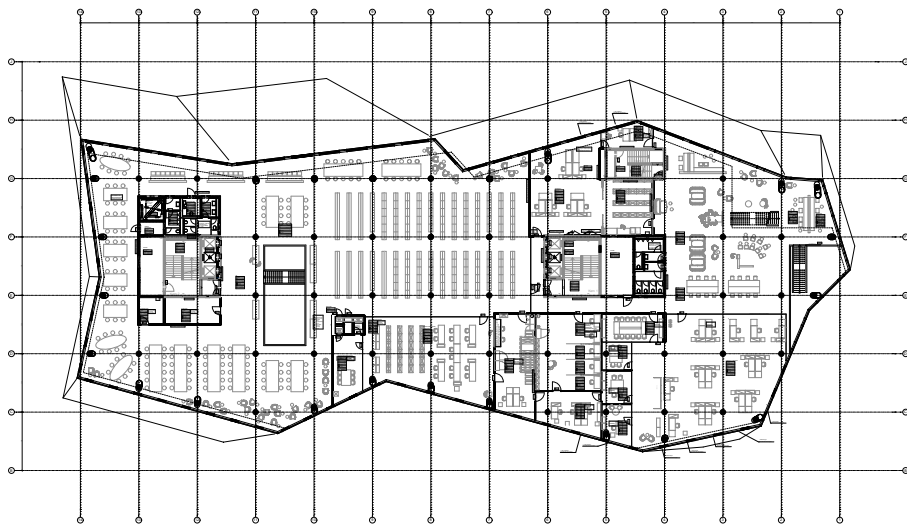




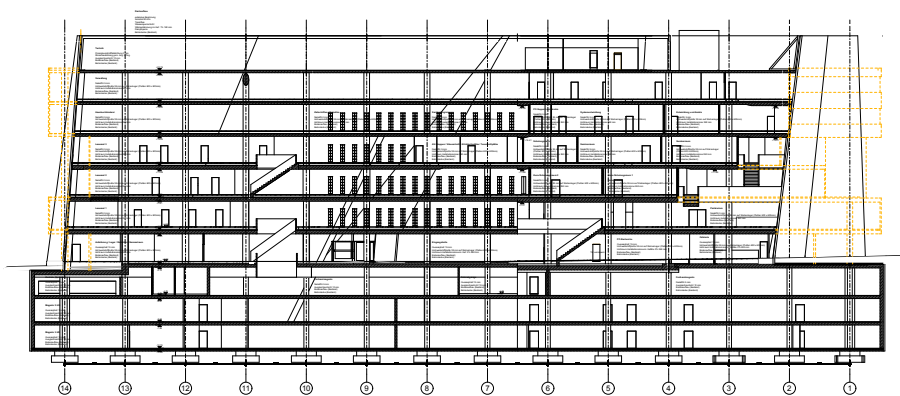
Parlatory © Sebastian Bender, Universitätsbibliothek Freiburg



Floor 2 © Degelo Architekten



Floor 4 © Degelo Architekten



Sectional drawing © Degelo Architekten

# Hochschule Fulda – University of Applied Sciences. Fulda, Germany

## A General information

### a Name and address

- 1 university
- 2 Hochschule Fulda – University of Applied Sciences
- 3 Leipziger Straße 123, Fulda
- 4 T +49 661 9640 9810, F +49 661 9640 9804; E hlb@hlb.hs-fulda.de
- 5 Dr. Marianne Riethmüller
- 6 Berthold Weiß, E direktion@hlb.hs-fulda.de; T +49 661 9640 9802

### b Population served

- 7 15,311
- 8 7,367 [The total number of students is 8,022]
- 9 655
- 10 481 [481 full time equivalents, 583 persons]

### c The old/original building(s)

- 11 1,281 m<sup>2</sup> [Year 2012]
- 12 69 [Year 2012]
- 13 5,319 m [Year 2012]
- 14 4,183 m [Year 2012]
- 15 1,136 m [Year 2012]
- 16 33 [Year 2012]

17 60 h./week, 267 days/year [in year 2012]

## B The new building

### a Architect(s)

18 ATELIER 30 Architekten GmbH, Bäderasse 1, 34123 Kassel

19 Thomas Fischer, Ole Creutzig

20 new building

### b Aims of the new building

21 By creating central work and study places the University & State Library (HLB) created conditions that are considered essential for a sustainable success and meaningfulness of a long-term disputed integration of the two libraries. Information opportunities and quality of information can only then meet the requirements of currently discussed and required strategic concepts.

The constant development of HLB as a modern, multi-media library, information and knowledge management system, as a competence centre for all questions concerning the information and media literacy, media provisioning and brokerage, information searches and placement using modern technology – takes place for the benefit of the university and the region. Thus making legitimate the construction of the University & State Library as the only academic library and Fulda University as the largest educational institution for Fulda and its region in the radius of 100 km.

The library capacity distributed over two locations has been exhausted for many years, a further development is possible in the sufficiently sized new integrated library.

### c Special Features

22 see no. 23

23 Emerged from a design competition from 2009, the university and state library is a part of a conglomerate of existing buildings. The university claimed the unused barracks in immediate vicinity and uses it according to its original purpose for administrative tasks. The library is one of three newly added elements and together with the two other new buildings gives the central campus a new identity. Seen from urban planning viewpoint, the newly formed square connects the current and new buildings, creating sightlines and path relations in the public

space. Resting on the square, the library acts as an intermediary of the campus: The height difference of the ground is skilfully overcome with a natural stone staircase thus forming a conclusion for the ensemble of the cafeteria, library and student service centre.

The library building has three floors. The entrance is oriented consistently to the newly generated centre and is fitted with wood-based composite panels. Thus, the entrance contrasts with the limestone facade and is easy to read for students and visitors. Similarly, the roof terrace is marked with wood-based composite panels and is recognizable from afar.

The interior of the building is clearly structured as a library and makes the orientation for students and visitors easy: An atrium with a central staircase connects all floors with one another. Daylight penetrates through the skylights into the atrium. Plenty of white in combination with wood radiate the necessary calmness for reading and learning. A reading cafe on the 2nd floor with an adjoining rooftop terrace provides space for both communication and relaxation.

By its external and internal aesthetics the building conveys what such a building should be able to – provide a space for science and contemplation.

## C Technical information

### a Floor area (24–35)

24 6,780 m<sup>2</sup>

Divided into

25

Special rooms for (26–29)

26

27

28 58 m<sup>2</sup>

29

Special activities (30–32)

30

31

32 65 m<sup>2</sup>

- 33 572 m<sup>2</sup>
- 34 175 m<sup>2</sup>
- 35 2,130 m<sup>2</sup>
- 36 1 ground floor, 2 upper floors, management / staff area is not accessible for the public

37 315

Divided into

38

39 45 [Number of computer workstations, including 1 PC for the visually impaired and 1 multimedia PC]

40 22 [11 individual study rooms (carrels) and 11 group work rooms]

41

#### **b Total potential capacity of shelving**

42 505,000 volumes [The goal is fixed by 505,000 vol.]

Including

43

44

45

46

47

48 13 [Total staff number operating at this location. For the mere opening of the building 2 persons are needed.]

#### **c Mechanical features**

49 Activated heating / cooling beams

50 Activated heating / cooling beams

51 Linear pendant lamps, table lamps, downlights

52 Open access area: flooring (carpet), ceiling (perforated plasterboard ceiling), wall (acoustic plaster). Workrooms: ceiling (perforated plasterboard), walls (micro-perforated cladding).

53 Two elevators (for internal and public use)

- 54
- 55 RFID tags / MK Solutions
- 56 Building systems controlled and regulated by microprocessor-based system. Management level above automation level integrates it into central building control system.
- 57 Lan CAT7, 1Gbit/s, Wlan 802.11 a/g/n/ac
- 58

## **D Schedule of the building process**

- 59 2009–2011
- 60 1st Prize in competition 2009
- 61
- 62 2011
- 63 2011–2013
- 64 2013
- 65 15. 08. 2013

## **E Costs (including taxes)**

- 66
- 67 11,500,000 EUR
- 68 374,000 EUR
- 69
- 70 14,674,000 EUR [Not the total cost. Three buildings were constructed, for example the cost of outdoor facilities is missing.]
- 71
- 72 Public

## **F Publications & Awards**

Architecture day 2014



Library exterior © Hochschule Fulda



Library interior © Hochschule Fulda

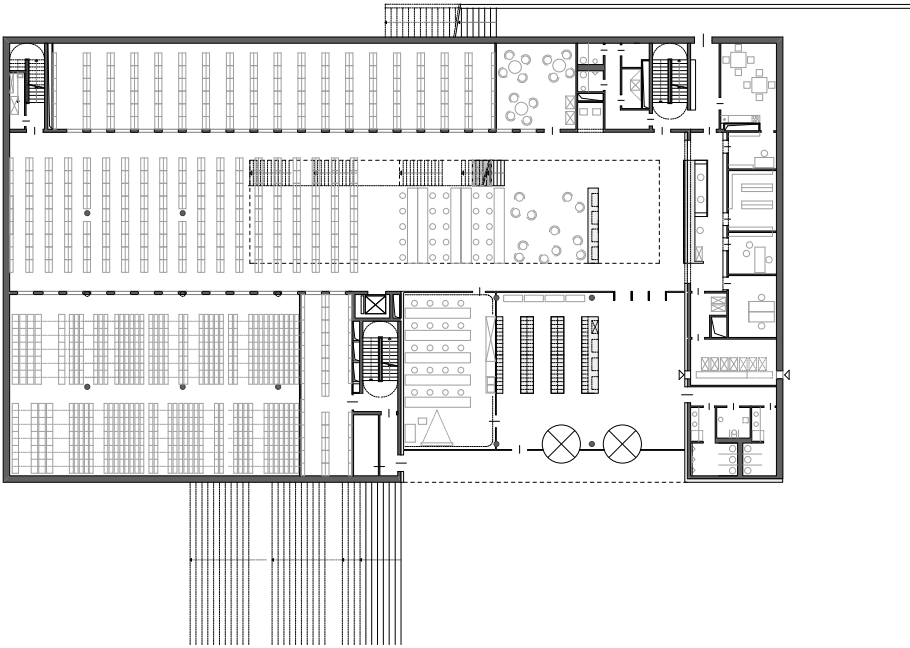




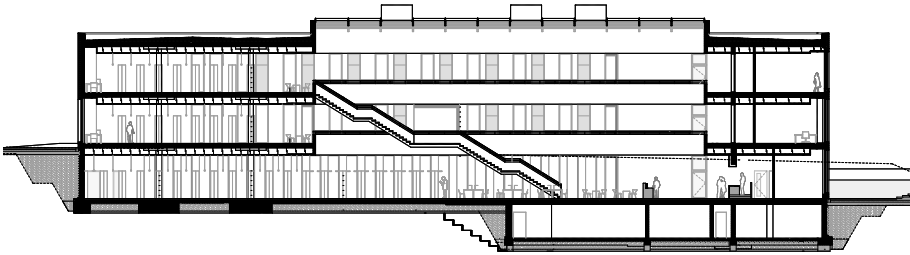
Library interior © Hochschule Fulda



Modell – Situation © ATELIER 30 Architekten GmbH



Ground Floor Plan © ATELIER 30 Architekten GmbH



Section © ATELIER 30 Architekten GmbH

# Fachbibliothek

## Design Medien Information.

### Hamburg, Germany

## A General information

### a Name and address

- 1 university [The Hochschulinformations- und Bibliotheksservice (HIBS) is the Libraryservice of the HAW Hamburg. There are five libraries belonging to the HIBS.]
- 2 Fachbibliothek Design Medien Information / Hochschulinformations- und Bibliotheksservice (HIBS), Hamburg University of Applied Sciences
- 3 Finkenau 35, 22081 Hamburg, Germany
- 4 T +49 404 2875 3665, F -; E holger.wendt@haw-hamburg.de
- 5 Holger Wendt
- 6 Holger Wendt, E holger.wendt@haw-hamburg.de; T +49 404 2875 3665

### b Population served

- 7 14,092 [This is the total number of users of the Hochschulinformations- und Bibliotheksservice (HIBS).]
- 8 2,849
- 9
- 10 124

### c The old/original building(s)

- 11 300 m<sup>2</sup>
- 12 10
- 13 30,000 volumes
- 14 30,000 volumes

15

16 3

17 35

## B The new building

### a Architect(s)

18 Gerber Architekten

19 Brigitte Tamásy

20 new building

### b Aims of the new building

21 New building at the Medien-campus Finkenau. Serving the faculty Design Medien Information.

### c Special Features

22 The library is located on the first floor of the new building at the Medien-campus Finkenau.

23 Polygonal ground plan, bricks, narrow windows.

## C Technical information

### a Floor area (24–35)

24 938 m<sup>2</sup>

Divided into

25 849 m<sup>2</sup>

Special rooms for (26–29)

26

27 84 m<sup>2</sup>

28

29 37 m<sup>2</sup>

Special activities (30–32)

30

31

32 999 m<sup>2</sup>

33 89 m<sup>2</sup>

34 35 m<sup>2</sup>

35

36 One floor

37 127

Divided into

38

39 22

40 15

41 90

**b Total potential capacity of shelving**

42 50,000 volumes

Including

43 56,000 volumes

44 1,000 volumes

45

46

47

48 Das Gebäude wird nicht von der Bibliothek betrieben.

**c Mechanical features**

49

50

51

52

53

54

55

56

57

58

## **D Schedule of the building process**

59

60 September 2008

61

62 September 2013

63 September 2013 – March 2015

64 2nd March 2015

65 16th March 2015

## **E Costs (including taxes)**

66

67

68 290,000 EUR

69

70

71

72



Northern Facade © Holger Wendt



Building at night © Holger Wendt

Fachbibliothek Design Medien Information. Hamburg, Germany



Workspace © Holger Wendt



Group Work Room © Holger Wendt





Chill Zone © Holger Wendt



Plan of the Library © Gerber Architekten

# Universitätsbibliothek Mainz, Bereichsbibliothek Georg Forster-Gebäude. Mainz, Germany

## A General information

### a Name and address

- 1 university
- 2 Universitätsbibliothek Mainz, Bereichsbibliothek Georg Forster-Gebäude  
/ Universität Mainz
- 3 Jakob-Welder-Weg 12, 55128 Mainz
- 4 T 06131-39 25664; E bbgforster@ub.uni-mainz.de
- 5 Dr. Andreas Brandtner
- 6 Roswitha Meuer, E R.Meuer@ub.uni-mainz.de; T 06131-39-24167

### b Population served

- 7 755,373 [Library users in 2014]
- 8
- 9
- 10

### c The old/original building(s)

- 11
- 12 230
- 13 240.00 volumes monographs, 255 current periodicals, all in open stacks

- 14
- 15
- 16
- 17

## B The new building

### a Architect(s)

- 18 Kühnl + Schmidt Architekten BDA, Karlsruhe
- 19 Jutta Becker-Lutzy, Landesbetrieb LBB Mainz
- 20 new building

### b Aims of the new building

- 21 The new building for the Social sciences links the Philosophicum with the Central Library and is an important milestone in the urban development of the Gutenberg Campus. This building complex, which bears the name of the Mainz naturalist and librarian Georg Forster, promises a sustained improvement of the limited conditions for research and teaching, to further develop and harness the great potential of the Humanities and Social sciences in Mainz.

### c Special Features

- 22 The new building was built between the existing structures of Philosophicum and University Library. It was perceived as a connecting link in design and height.
- 23 The shape of the new building takes on the form of the atrium of the Faculty of Arts and supplements it with an elevated U-shaped structure towards Jakob-Welder-Weg. The connection to the adjacent building pursues the functional aspects of buildings usage.

The northern elevation of the new building received a brick facade similar to the facade of the Faculty of Arts. The elevated Seminar building facing the new central square received a hanging glass panel facade – in three shades of green.

The library is an “Open Space Library” with floor area of around 3,850 m<sup>2</sup> in two floors. The two levels are connected with an open space and also exposed to an inner green courtyard. “Latches” in different length and width characterize the design of the southern new building’s facade.

The roof over the open space of the library was designed with light bars (skylights) and planting bars.

This geometrically designed inner garden continues in the “graphical” design of external facilities.

## C Technical information

### a Floor area (24–35)

24 16,300 m<sup>2</sup>

Divided into

25 3,850 m<sup>2</sup>

Special rooms for (26–29)

26

27

28

29 7 group work rooms, 1 parents-children room, 1 training room

Special activities (30–32)

30

31

32

33

34

35

36

37 420

Divided into

38

39 37

40 66

41 317

**b Total potential capacity of shelving**

42 392,000 monograph volumes, 452 current periodicals, all in open stacks

Including

43

44

45

46

47

48 15

**c Mechanical features**

49 Underground channel under the baseplate is used for the pre-conditioning of the outside air, and thus reduces energy consumption.

50 Cooling in summer and heating in winter through a concrete core activation.

51

52

53

54

55 RFID

56

57

58 Rainwater is collected in an external tank and used as a service water.

**D Schedule of the building process**

59

60

61

62 April 2010

63

64

65 May 2013

## E Costs (including taxes)

66

67 53,000,000 EUR

68 1,000,000 EUR

69

70

71

72 Rheinland-Pfalz state

## F Publications & Awards

Monika Hagenmaier: Aus vier mach eins! Der Neubau der Bereichsbibliothek Georg Forster-Gebäude. Wichtiger Schritt in der Entwicklung zur BuB 65 (2013) 11–12, S. 784–787

Good Practice Energieeffizienz in der Kategorie “Gebäudebezogene Projekte”  
Das Label “Good Practice Energieeffizienz” vergibt die dena für Aktivitäten und Projekte, die zur Steigerung der Energieeffizienz und zur Reduzierung des Endenergieverbrauchs beitragen.



Outside view from the southeast © Thomas Hartmann



Entrance area © Thomas Hartmann

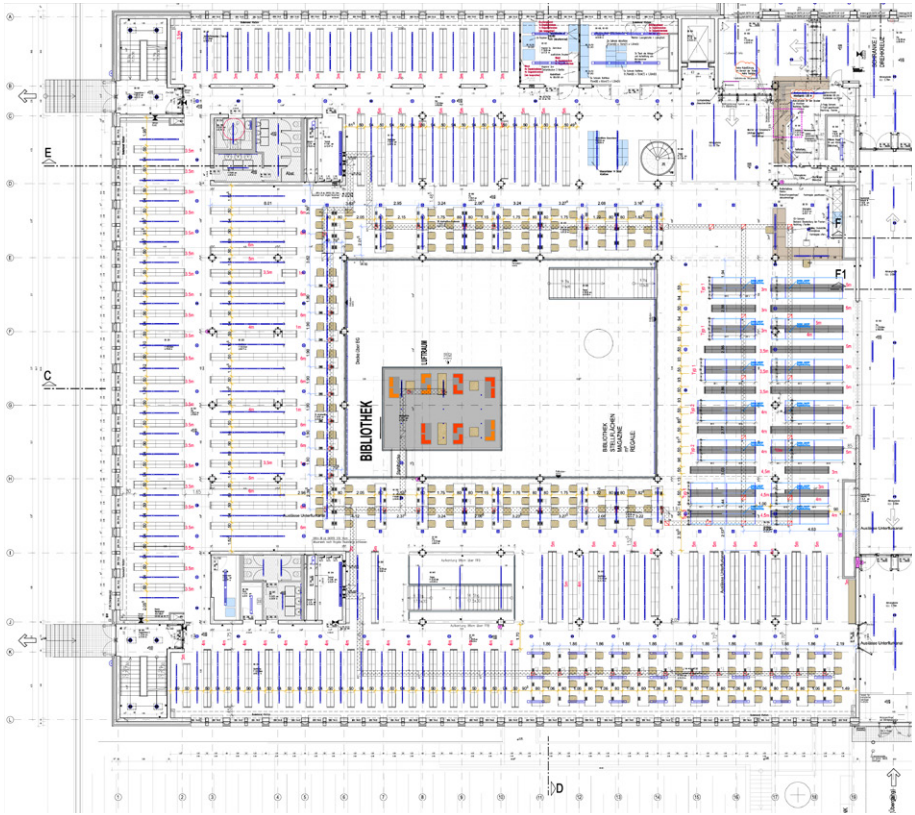


Inside view with Moses © Thomas Hartmann

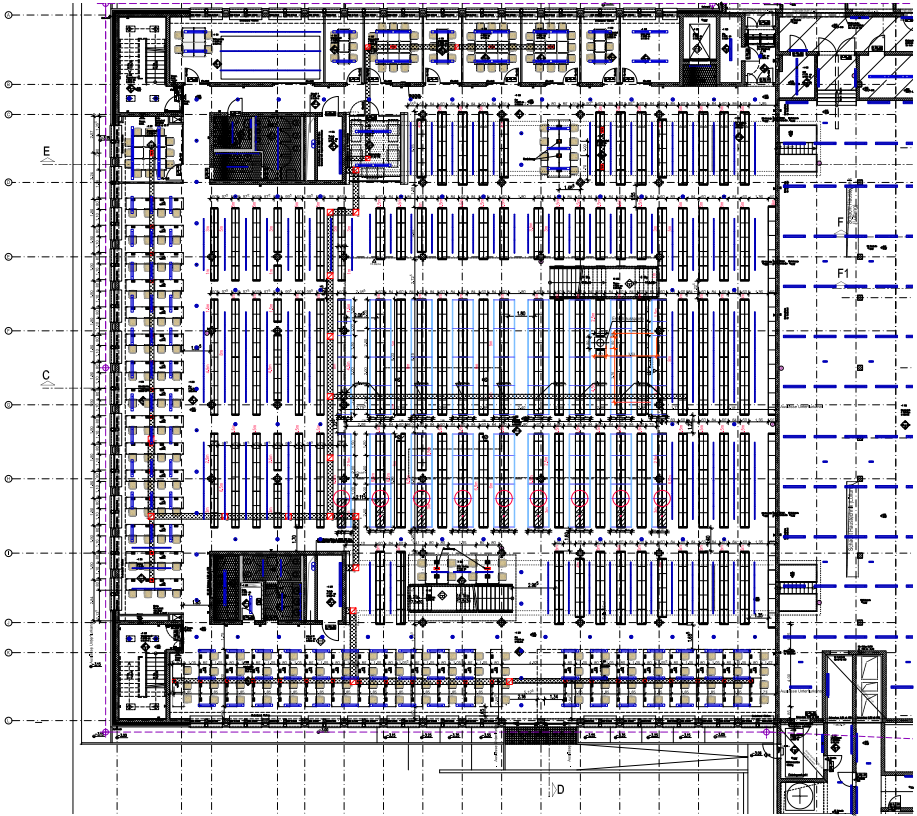


Inside view © Thomas Hartmann





Groundfloor plan Architekten Kühl + Schmidt © LBB Mainz



Basement Floor plan Architekten Kühnl + Schmidt © LBB Mainz

# Universitätsbibliothek Mannheim.

## Mannheim, Germany

### A General information

#### a Name and address

- 1 university [General Science Library]
- 2 Universitätsbibliothek Mannheim / Universität Mannheim
- 3 Schloss Schneckenhof West, D-68131 Mannheim, Deutschland
- 4 T +49 621 181 2940, F +49 621 181 2939; E [ub@bib.uni-mannheim.de](mailto:ub@bib.uni-mannheim.de)
- 5 Dipl. Phys. Christian Benz
- 6 Katharina Rautenberg, E [katharina.rautenberg@bib.uni-mannheim.de](mailto:katharina.rautenberg@bib.uni-mannheim.de);  
T +49 621 181 3018

#### b Population served

- 7 18,000
- 8 12,362
- 9
- 10 1,604

#### c The old/original building(s)

- 11 19,653 m<sup>2</sup>
- 12 2012 [University Library total]
- 13 1,940,000 volumes
- 14 776,000 volumes
- 15 1,164,000 volumes
- 16 83 [82,5 FTE, without student help]

17 108 hours/week, 306 days/year

## B The new building

### a Architect(s)

18 UKW Innenarchitekten, Krefeld

19 Jochen Usinger

20 renovation [Thorough redesign of the central reading room into a modern learning center.]

### b Aims of the new building

21 The central reading room, which already included a temporary group work zone has been transformed into a modern learning center. The aim was to create a place for learning, where the students could at any time find a most supportive and flexible environment particularly for collaborative, but also for informal learning, with the latest technical equipment. An important goal was to create as many different workspaces as possible by convenient zoning of the large space.

### c Special Features

22 Central location on the suburban campus in the immediate vicinity of the central library and computer infocenter and of the busy area of libraries Schloss Schneckenhof South (Business Administration).

23 Rectangular ground plan, 1 level on the 1st floor in the east wing of the historical baroque castle. Ceiling height 5 m. Ceiling high windows with historical crossbar frames allow for natural light.

## C Technical information

### a Floor area (24–35)

24 620 m<sup>2</sup>

Divided into

25 620 m<sup>2</sup>

Special rooms for (26–29)

26 17 so-called PalMa team monitors in the group workzone, 3 monitors for virtual textbook collection and 2 Smart boards.

27 Conscious/intentional, almost complete abandonment of fixed PCs within the Learning Center. Mobile devices available for loan.

28

29 25 m<sup>2</sup> [Learning zones separated by high wooden walls as “room within a room”, flexible furnishing without permanently installed PCs.]

Special activities (30–32)

30

31

32 91 m<sup>2</sup> [Lounge area]

33

34

35

36 Break room with vending machines, and water dispenser adjacent to the new Learning Center.

37 180 [150 of them in group work zone, 30 in lounge]

Divided into

38 Electronic media can be accessed on PalMa monitors in principle from all seats in the group workspace.

39 2 fixed PCs, plus 50 tablets and 5 notebooks on loan. In addition, there are 20 laptops for learning/training use.

40 20 [Chair desks available for 20 persons in the Training area.]

41

## **b Total potential capacity of shelving**

42 1,550 m [Copies of textbooks from the collection as reference-only copy in “break room”. Issues of general journals in lounge.]

Including

43 1,550 m

44

45

46

47

48 No information because of connection with the university library

**c Mechanical features**

49 natural ventilation

50 conventional

51 Full coverage dimmable ceiling lamps, floor lamps in additional lounge area, individually switchable lighting in "Cubes".

52 Acoustic ceiling, micro-perforated wood panels on fixed furnishing, partly 3.20 m high upholstered furniture, carpeting,

53 1 lift

54

55 Magnetic stripes

56 Shading on windows, speaker system

57 Area covering WLAN, fixed LAN ports in "Cubes"

58

**D Schedule of the building process**

59 2012

60

61 second half of 2014

62 January 2014

63 4 months

64 end of April / beginning of May 2014

65 14th May 2014

**E Costs (including taxes)**

66

67

68 440,000 EUR

69

70 650,000 EUR [Furniture, Electrotechnical Equipment]

71

72 Private donation 3,000 EUR

## F Publications & Awards

Annette Klein, Katharina Rautenberg, Jochen Usinger and Andrea Dombrowe (2014): Vom Lesesaal zum Learning Center.

Annette Klein, Katharina Rautenberg, Jochen Usinger and Andrea Dombrowe (2014): Vom Lesesaal zum Learning Center. Ein neues Raum- und Benutzungskonzept an der UB Mannheim. BIT online: Zeitschrift für Bibliothek, Information und Technologie mit aktueller Internet-Präsenz, 17, 4, 321–328.



Schloss Schneckenhof West, view from the inner yard  
(The new Learning center is located on the 2nd floor) © Universitätsbibliothek Mannheim



Inside the Learning center, double Cube with the PalMa monitor  
© Universitätsbibliothek Mannheim



Inside the Learning center, Lounge area © Universitätsbibliothek Mannheim





Inside the Learning center, mobile chairs and tables, Cubes, PalMa tables in the background  
© Universitätsbibliothek Mannheim



Groundfloor plan of the learning center and adjoining areas, UKW architects office  
© UKW, Universitätsbibliothek Mannheim

# The Cregan Library, St. Patrick's Campus. Dublin, Ireland

## A General information

### a Name and address

- 1 university [We are currently a linked College of the University – We will become a faculty in September 2016.]
- 2 The Cregan Library, St. Patrick's Campus / DCU (Dublin City University)
- 3 Drumcondra, Dublin 9
- 4 T 353 1 8842170, F 353 1 8376197; E library@spd.dcu.ie
- 5 Orla Nic Aodha
- 6 Orla Nic Aodha, E orla.nicaodha@spd.dcu.ie; T 353 1 8842174

### b Population served

- 7 3,200 [There are 11,000 students in the University, 3,500 are based in Drumcondra campus – all 11,000 have access in theory.]
- 8 2,400
- 9 800
- 10 230 [There are 230 core staff with an additional 300 part time staff.]

### c The old/original building(s)

- 11 1,224 m<sup>2</sup> [1 library space and 1 Resource Center space:  
Old Library: 1,018 m<sup>2</sup>, Resource Center: 296 m<sup>2</sup>]
- 12 240 [The old library building had 200 seats,  
The Resource Center had 40 seats.]
- 13 3,000 m

- 14 3,000 m
- 15
- 16 14 [We have 14 library staff and 8 shelvers (library attendants). 22 people = 14 FTE.]
- 17 63 hours per week semester time and 40 hours summer time, 279 days per year

## B The new building

### a Architect(s)

- 18 Taylor Architects
- 19 Eamon McCarney / Conor Pitman
- 20 new building [A campus development consisted of 3 new buildings. One of the 3 buildings was a new library.]

### b Aims of the new building

- 21 The old library was no longer fit for purpose. There was an insufficient number of seats, no space for Special Collections and not enough shelving.

The main objectives for the new space was to provide:

- › A stand alone library building. We moved from a one floor space to a four floor stand alone building.

Other aims were to provide:

- › Group study spaces
- › Integrated study / library / IT / social spaces
- › Integrate the library and the Resource Center
- › A dedicated Special Collections / Archive Reading Room

We also wished to install a security and access system for the first time as well as converting all stock (150,000) to RFID.

Another aim was to make the ground floor accessible to the public and provide a coffee shop and a social space for the staff and students of the College as well as the local community.

There was a separate Resource Center in the College – a space to aid the preparation of School Placement for our education students – this collection was moved to the new building and was integrated into the main library. This means we can provide the same longer opening hours and provide more accessibility.

Another objective was the provision of conference facilities, Seminar rooms and exhibition spaces.

## c Special Features

22 The new library was to form a visual link between the campus and the community so that it became a prominent feature in Drumcondra village and on campus.

23 The Library Building (East Building) is one of 3 new buildings constructed as part of the overall St Patrick's College major campus development works completed in 2015. It is 4,825 m<sup>2</sup> over four storeys.

The structural frame of the building is reinforced concrete with fair faced finish internally. The concrete used in the construction of the building is GGBS low CO<sub>2</sub> cement. The feature central accommodation stair serves all four floors in an open plan arrangement.

The external cladding is a combination of brick cavity walls finished with blue variegated bricks and rainscreen cladding with 'Fibre C' GRC cladding panels with feature shotgun blast perforations. The glazing comprises thermally broken structural glazed curtain walling with the glass finished flush with the Fibre C cladding. The entrance atrium features a large curtain walling element with coloured glass panels to resemble other stain glass feature windows on the campus.

The building is generally set out to a 6m modular grid with a glazed lantern over the main central stairs. This provides natural lighting to the inner floor plate via the main stairwell.

The building is designed to be fully accessible for people with disabilities. The main entrance to the building is served with a wheelchair accessible ramp from the east entrance and there is an external platform lift to the south side of the building to accommodate the change in site levels. A passenger lift provides wheelchair users access to all floors. Disabled toilet facilities are available on each floor. All built in furniture including the reception desk is designed for people with disabilities.

The building is designed to achieve a BER rating A3. The CO<sub>2</sub> emissions for the building is calculated as 30 kg CO<sub>2</sub>/m<sup>2</sup>/year. The building uses 138 kWh/m<sup>2</sup> compared with 300 kWh/m<sup>2</sup> of a notional building.

## C Technical information

### a Floor area (24–35)

24 4,825 m<sup>2</sup>

Divided into

25 4,000 m<sup>2</sup>

### Special rooms for (26–29)

**26**

**27** 277 m<sup>2</sup> [3 lecture rooms for Education Students – ICT in the primary classroom – patrons have access when not in use.]

**28** 29 m<sup>2</sup> [Compact shelving, temperature and humidity controlled. There is a Special Collections Reading Room next door that is 12.764 m<sup>2</sup>]

**29** 66 m<sup>2</sup> [2 Seminar Rooms (34 and 32 m<sup>2</sup>) – one for College staff the other is used for student group study.]

### Special activities (30–32)

**30** 140 m<sup>2</sup> [Ground Floor Space with a steel grid along one wall to accommodate hanging exhibitions.]

**31** 195 m<sup>2</sup> [The lecture Hall is on the ground floor and used for public lectures. It has 180 seats.]

**32** 269 m<sup>2</sup> [Coffee Shop and seating area (mixture of cafe tables and chairs and soft seating) on the ground floor.]

**33** 225 m<sup>2</sup> [6 Separate staff areas spread over 3 floors – Reception Desk Area, Technical Services, Information Services and Senior Staff Offices.]

**34** 29 m<sup>2</sup> [Only closed access stacks are held in Special Collections Room.]

**35**

**36** The building has 4 levels, all public. There are staff offices on all floors excluding top floor.

**37** 477 [80 are on ground floor and open to the public  
Includes soft / modular / couches / reading chairs.]

### Divided into

**38**

**39** 192 [82 computers in the ICT rooms and 26 computers spread over three floors.  
84 available in ICT rooms]

**40** 30 [1 seminar room is bookable by all College staff, students are permitted to book the other online for study sessions.]

**41** 230 [Excluding 80 on ground floor and 63 other types – sofas, soft chairs and beanbags.]

### **b Total potential capacity of shelving**

**42** 3,700 m

Including

- 43 3,450 m
- 44 No other closed access stack other than compact shelving listed below.
- 45 250 m [Housing Special Collections (Pre 1880) material in a temperature controlled room.]
- 46 10 m
- 47
- 48 14 [No extra staff employed to operate the new library]

### c Mechanical features

- 49 Air conditioning plant on the roof supplies air via underfloor mechanical ducts to raised access floor plenum on each level.
- 50 Heating is controlled via room temperature sensors located around the building and linked back to the building management system.
- 51 Artificial lighting is provided via T5 lamp type with high frequency ballast, with automatic control systems.
- 52 Acoustic design targets used to control external noise intrusion, internal sound insulation, room acoustics and noise emission.
- 53 1 elevator for staff / public / and freight.  
Central staircase
- 54 Book Trolleys using elevator
- 55 Integrated Security management and access control system – RFID.
- 56 Yes
- 57 1Gb Internet (soon to be 10GB)  
10Gb cat. 6 LAN  
WiFi available everywhere (Eduroam and Guest)
- 58 Self Issue – all stock RFID.

## D Schedule of the building process

- 59 2007
- 60 2007
- 61 2012–2015

- 62 2012
- 63 2015
- 64 January/February 2015
- 65 9th February 2015

## E Costs (including taxes)

- 66 The new building was built on existing College site, so no site charge.
- 67 47,000,000 EUR [Cost of 3 buildings in total. New library, new gym and new lecture theatre]
- 68
- 69 All fees included in the total cost of 46.8 million EUR
- 70
- 71 As they are new buildings we expect the operating costs to be reduced due to design and innovative construction methods.
- 72 Public Funding

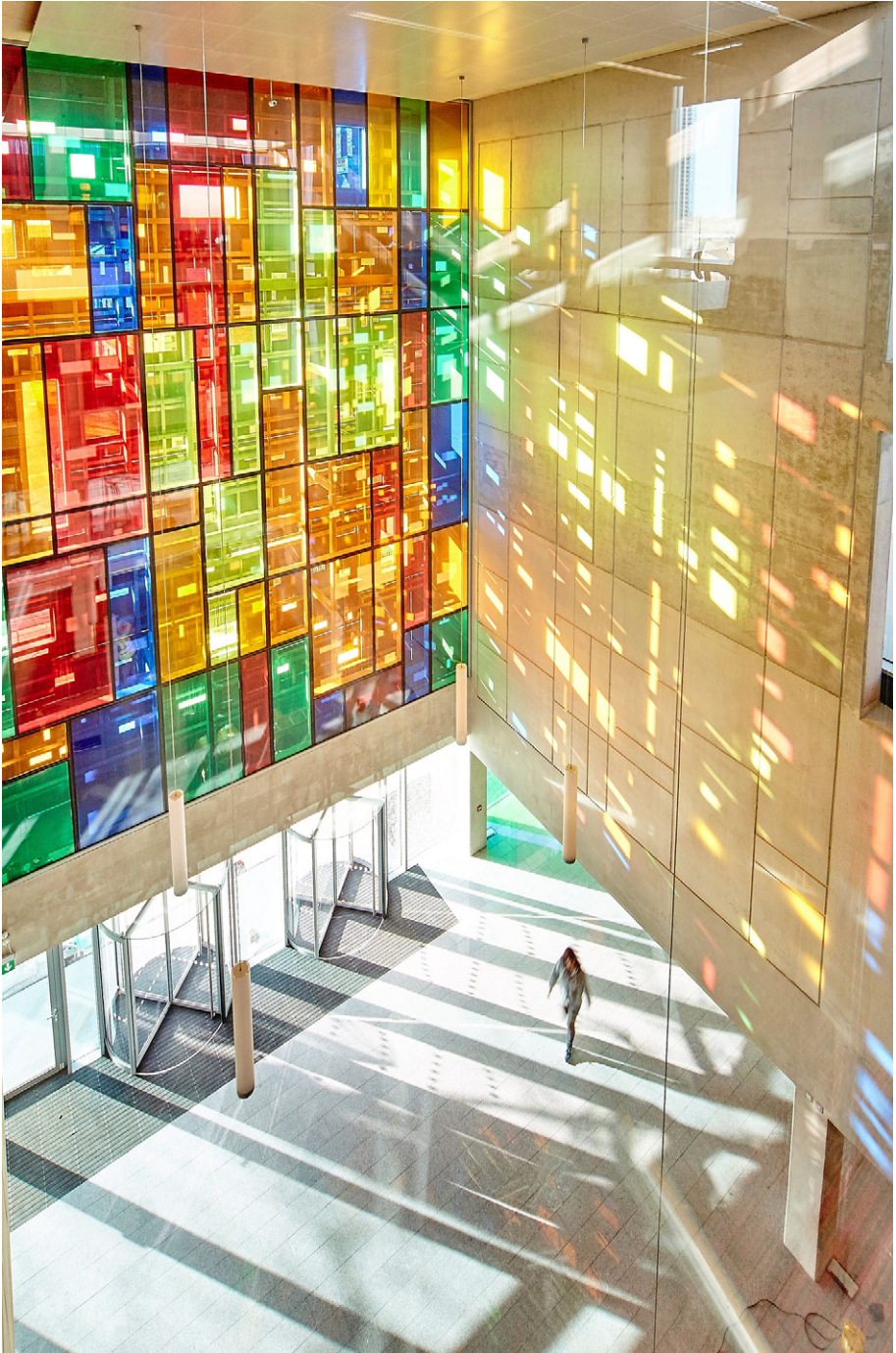


South View (Night) © Donal Murphy



East View © Donal Murphy





Library Foyer © Simon Lazewski

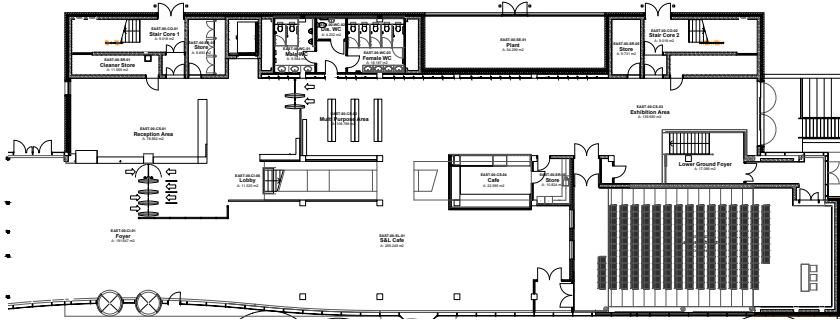
The Cregan Library, St. Patrick's Campus. Dublin, Ireland



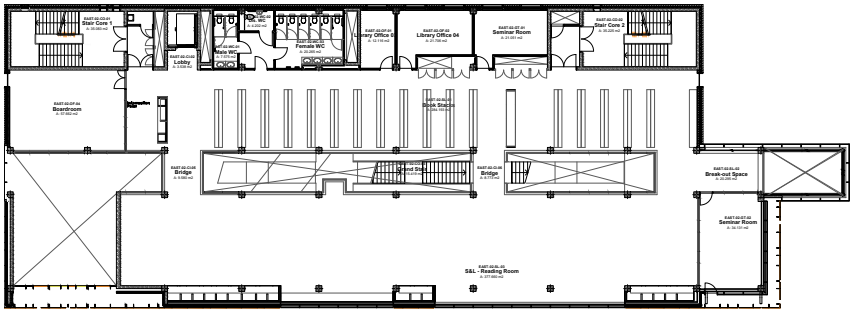
3rd Floor, East Side © Simon Lazewski



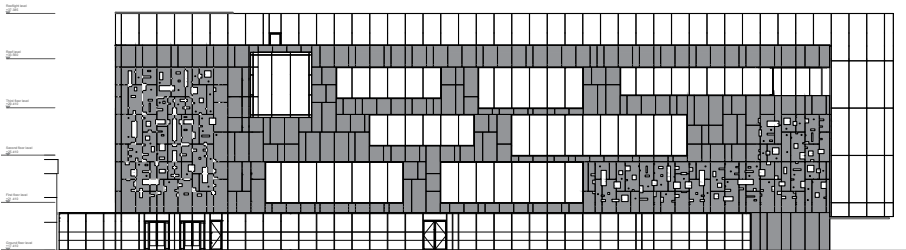
Main Stairway © Taylor Architects



Ground Floor Plan © Taylor Architects



2nd Floor Plan © Taylor Architects



South Elevation Plan © Taylor Architects

# Umeå City Library.

## Umeå, Sweden

### A General information

#### a Name and address

- 1 public
- 2 Umeå City Library / City of Umeå, Sweden
- 3 Storgatan 46a, Umeå, Sweden
- 4 T +46 90 16 33 00; E stadsbiblioteket@umea.se
- 5 Ingegerd Frankki
- 6 Leif Mårtensson, E leif.martensson@umea.se; T +46 90 16 33 52

#### b Population served

- 7
- 8
- 9
- 10 156 [Includes all staff at the Culture administration, main library, library branches, art section, programme section and museum]

#### c The old/original building(s)

- 11 3,400 m<sup>2</sup>
- 12 200
- 13 12,500 m
- 14 4,500 m
- 15 8,000 m
- 16 50

## B The new building

### a Architect(s)

18 Snøhetta, Oslo, Norway

19

20 new building [The idea was to develop the area along the river in central part of Umeå to an attractive meeting place]

### b Aims of the new building

21 A meeting place that stimulates creation, knowledge and creativity.

The natural hub in Umeå – open and accessible to all.

A unique place with a business that is constantly changing and built on co-creation, trust and diversity.

A symbol of cross-border cultural encounters that operates Umeå's development, innovation and growth well into the future

### c Special Features

22 The Culture path connects the commercial centre with a cultural paths along the river between the Arts Campus east of the city centre and the park west of downtown.

23 With inspiration from the birch – Umeå's beloved tree – the architect let the façade of the house grew.

## C Technical information

### a Floor area (24–35)

24 25,000 m<sup>2</sup> [The Culture house contains a library, theatre, cinemas, art hall, museum of women's history, Conference centre, hotels, cafées and restaurants.]

Divided into

25 15,000 m<sup>2</sup> [Library, Theatre, Cinemas, Art hall, museum and other public areas. Remaining 10,000 m<sup>2</sup> rented by a private company.]

Special rooms for (26–29)

26

27

28

29

Special activities (30–32)

30 1,000 m<sup>2</sup> [Art hall and Museum of women's history.]

31 330 m<sup>2</sup> [Mid sizes meeting rooms]

32 400 m<sup>2</sup> [Café rented and runned by a private company]

33 2,900 m<sup>2</sup>

34

35 1,500 m<sup>2</sup>

36

37 300

Divided into

38 Smartboards in all programme rooms.  
Displays in all bookable study rooms.

39 47

40

41

## **b Total potential capacity of shelving**

42 12,000 m

Including

43 5,300 m

44 400 m

45 6,000 m

46 100 m

47

48 60

## **c Mechanical features**

49

- 50
- 51 LED
- 52
- 53 7 elevators and 2 escalators
- 54 Lyngsoe Systems
- 55 RFID Tagsys LSP3
- 56
- 57 Open wifi for visitors.  
Fiber network for work places and information desks.
- 58

## **D Schedule of the building process**

- 59
- 60
- 61
- 62 November, 2011
- 63 July, 2014
- 64 September, 2014
- 65 November 21, 2014

## **E Costs (including taxes)**

- 66
- 67 98,000,000 EUR [Exchange rate 9,38]
- 68 5,550,000 EUR [Exchange rate 9,38]
- 69
- 70
- 71 7,700,000 EUR [Exchange rate 9,38]
- 72 This is a joint Project between the city of Umeå and the private  
Company, Balticgruppen AB

## F Publications & Awards

### Kasper Salin Award

Sweden's leading architecture prize

### Building of the year

Nominated as building of the year 2014 by Swedish Construction organisation

### Mies van der Rohe Award

Nominated to one of the worlds most famous architect award, Mies van der Rohe Award,  
The European Union Contemporary Architect award



From the park © City of Umeå





Childrens department © City of Umeå



Museum entrance © City of Umeå



Story telling room © City of Umeå

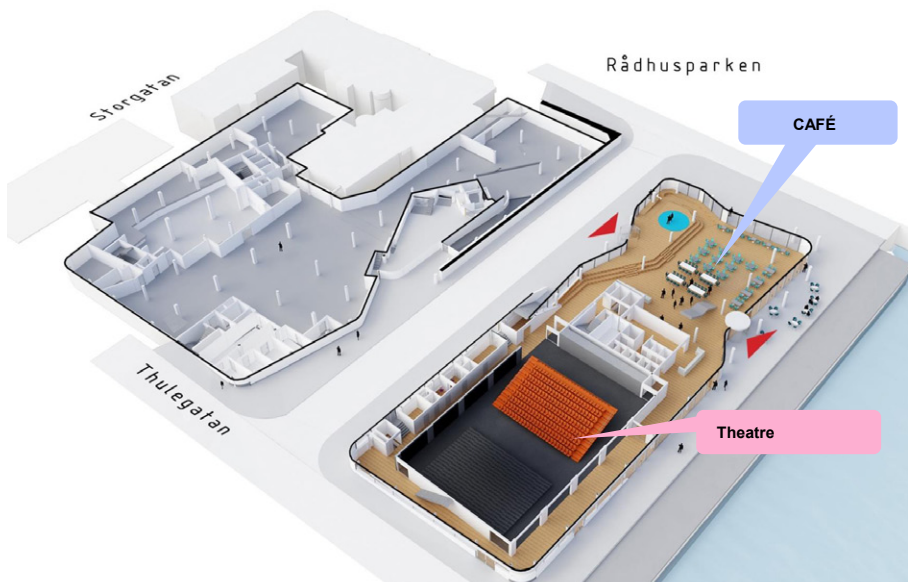


Fantasy section © City of Umeå

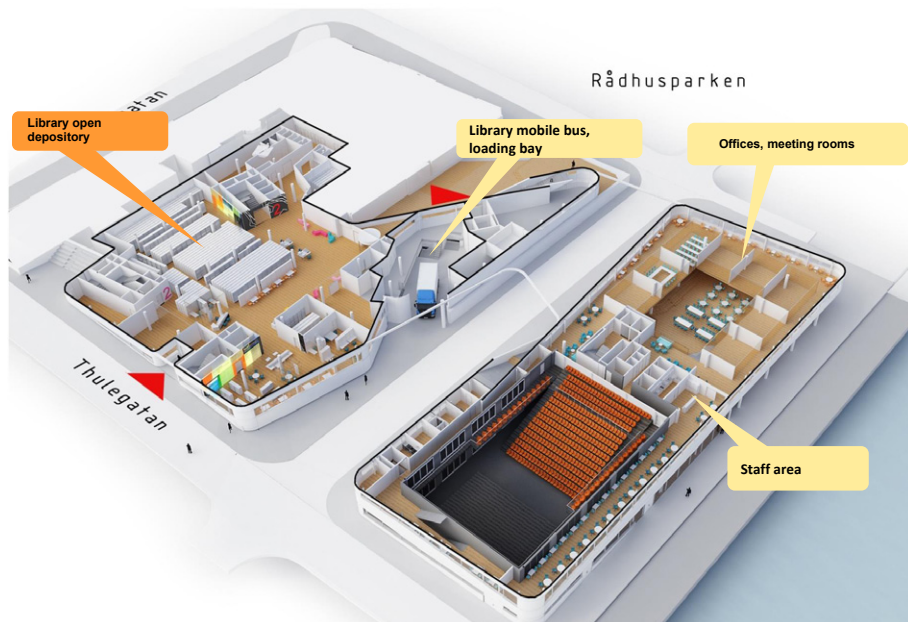


Drinking fountain © City of Umeå

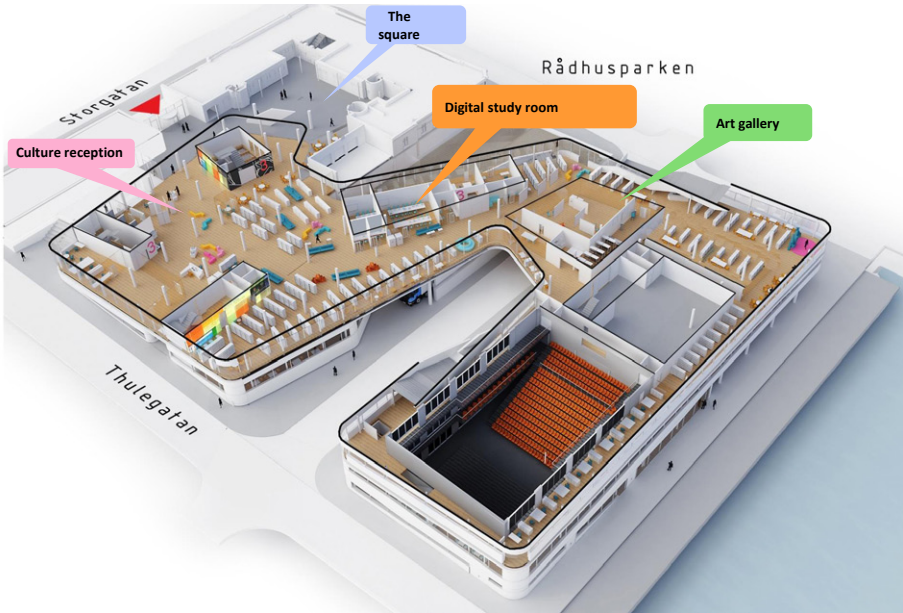
Umeå City Library. Umeå, Sweden



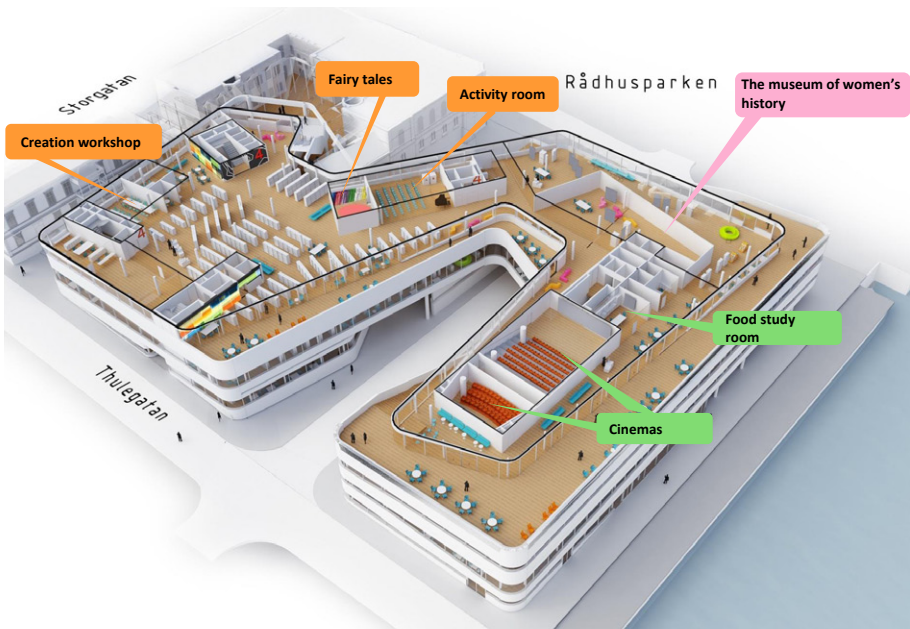
Perspective of level 1 © City of Umeå



Perspective of level 2 © City of Umeå



Perspective of level 3 © City of Umeå



Perspective of level 4 © City of Umeå

# Kooperative Speicherbibliothek Schweiz (Cooperative Storage Facility Switzerland). Büron, Switzerland

## A General information

### a Name and address

- 1 Cooperative storage facility
- 2 Kooperative Speicherbibliothek Schweiz (Cooperative Storage Facility Switzerland)
- 3 Grabenmattstrasse 15, 6233 Büron
- 4 T 0041 41 932 00 00; E info@speicherbibliothek.ch
- 5 Mike Märki
- 6 Mike Märki, Dr. Ulrich Niederer

### b Population served

- 7 NA  
See answer no 21. The storage facility is serving five libraries.
- 8 Universität Luzern: 2,774, PH Luzern: 1,846, HSLU (Hochschule Luzern): 5,913
- 9 Universität Luzern: 286, PH Luzern: 566, HSLU (Hochschule Luzern): 4,364
- 10 Universität Luzern: 744, PH Luzern: 605, HSLU (Hochschule Luzern): 1,555

### c The old/original building(s)

- 11 NA

See answer no. 21. The storage facility serves five libraries and has no precursor.

- 12 NA
- 13 NA
- 14 NA
- 15 NA
- 16 NA
- 17 NA

## B The new building

### a Architect(s)

- 18 gzp architekten ag, Zentralstrasse 10, 6003 Luzern
- 19 Pius Glanzmann, Dipl. Architekt FH/ MAS ETH
- 20 new building [Off-site storage facility.]

### b Aims of the new building

- 21 New building, off-site storage facility for five academic and cantonal libraries from German speaking Switzerland: Universitätsbibliothek Basel, Zentral- & Hochschulbibliothek Luzern (ZHB), Zentralbibliothek Solothurn, libraries of the Universität Zürich, Zentralbibliothek Zürich. All libraries free valuable space in their main central buildings by storing rarely used holdings off-site, space they can use e.g. for more user places.

### c Special Features

- 22 The facility is situated 30 – 80 kilometres from all partner libraries. A courier serves partner libraries (and other libraries from the Information Network Switzerland) on a daily basis. The ZHB Luzern has its own courier running twice a day, because it stores all of its holdings here. The Storage facility offers document delivery service in electronic or paper form.
- 23 Square high bay storage facility (72 m × 20 m × 18 m) with integrated administration tract (72 m × 10 m × 18 m). Its massive concrete construction ensures passive climatisation, its façade is made of Corten steel. The oxygen reduction guarantees fire prevention and protection.

## C Technical information

### a Floor area (24–35)

- 24 High bay storage: 1,800 m<sup>2</sup> (one floor, 18 m high); administrative/house technology part: 2,800 m<sup>2</sup> (4 floors)

Divided into

- 25 Reading room (8 seats)

Special rooms for (26–29)

- 26 NA

- 27 NA, WLAN throughout

- 28 NA

- 29 Meeting hall, 36 to 45 seats.

Special activities (30–32)

- 30 NA

- 31 NA

- 32 NA

- 33 Director's office, administration, librarian, space for picking books out of boxes/re-storing, offices for document delivery jobs, refreshment room for collaborators.

- 34 High bay storage 1,800 m<sup>2</sup>, one floor.

- 35 Corridors, lifts, staircases: 730 m<sup>2</sup>, toilets/wardrobes: 60 m<sup>2</sup>, house technology: 300 m<sup>2</sup>, picking areas: 16 m<sup>2</sup>, spare space: 450 m<sup>2</sup>.

- 36 Administrative area: ground floor (reading room, wardrobes and toilets, 3 delivery bays), 1st floor (conference room, administration, picking area, wardrobes and toilets, house technology), 2nd floor (administration, picking area, document delivery offices), 3rd floor (spare space), 4th floor (house technology, visitors area)

- 37 8

Divided into

- 38 NA

- 39 NA

- 40 NA



41 NA

## **b Total potential capacity of shelving**

42 3,100,000 volumes [3,100,000 items (first module; construction of 3 more modules is possible on the site).]

Including

43 NA

44 3,100,000 volumes

45 NA

46 NA

47 NA

48 7 [6.9 FTE]

## **c Mechanical features**

49 Administrative area: controlled ventilation. High bay storage area: no ventilation (apart from the very efficient ventilation through the moving robots), humidification, temperature control, no air conditioning (could be installed in the prepared ducts); reduction of oxygen

50 Through a heat pump

51 LED (according to Swiss standard 'Minergie', SIA 380/4)

52 Administrative area: according to Swiss norms; high bay storage area: no measures.

53 Elevator for persons, elevator for heavy loads

54 High bay storage area: fully automated storage facility, books stored in boxes that are transported and stored by robots

55 Storage area has an entry alarm because of the reduced oxygen and the moving robots that doubles as theft detection

56 Building automation system

57 WLAN

58 Oxygen reduction through the infusion of nitrogen

## D Schedule of the building process

- 59 2012/2013
- 60 Summer 2013
- 61
- 62 August 2014
- 63 January 2016
- 64
- 65

## E Costs (including taxes)

- 66 2,900,000 EUR [3.15 M CHF]
- 67 14,600,000 EUR [16 M CHF including fees]
- 68 228,500 EUR (250,000 CHF) for equipment in administrative area, 11.4M EUR (12.5 M CHF) for logistic infrastructure
- 69 see no 67
- 70 30,000,000 EUR [33 M CHF]
- 71 2,700,000 EUR [3M CHF building costs (incl. capital costs), cca 1 M CHF for services (based on estimates)]
- 72 External funding

## F Publications & Awards

[www.speicherbibliothek.ch](http://www.speicherbibliothek.ch)

Niederer, Ulrich, 2015 Aufbewahren in Bibliotheken

Niederer, Ulrich 2015 Aufbewahren in Bibliotheken – konzentrieren oder verteilen?

Beides! Ein Bericht aus der Schweiz, 027.7 Zeitschrift für Bibliothekskultur, 3 (2015), No. 1, pp. 4–10 (online journal, accessed 1. 12. 2015)

Niederer, Ulrich, presentations at the Kuopio conferences on repository libraries 2009 and 2015

<http://www.varastokirjasto.fi/Kuopio3/programme.htm> for 2009 and

<http://www.varastokirjasto.fi/kuopio5/kuopio-5/programme/> for 2015 (both accessed 1. 12. 2015)



Three more storage area units can be added on the premises to the right of the building.

© Ulrich Niederer



The main entrance is at the beginning of the protruding roof, the delivery bays at the far end of this roof. © Ulrich Niederer

Kooperative Speicherbibliothek Schweiz. Büron, Switzerland

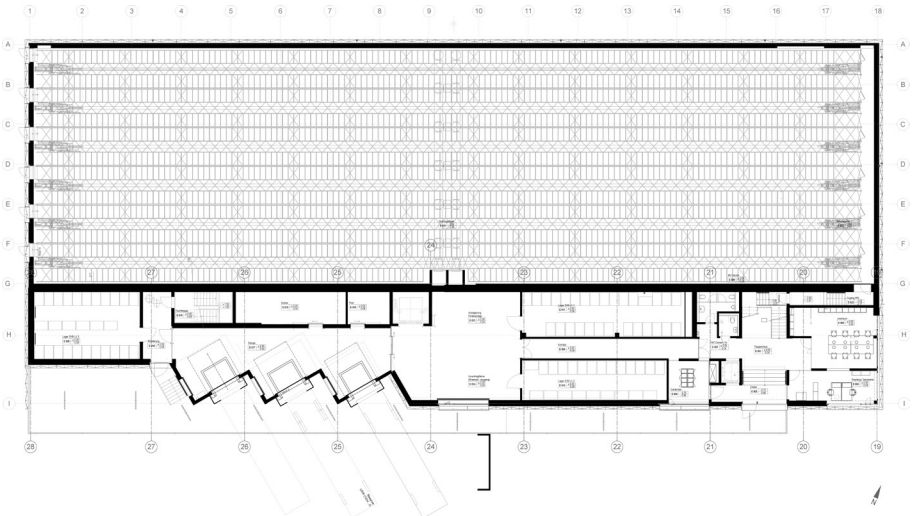


Constructing the high bay storage area © Ulrich Niederer

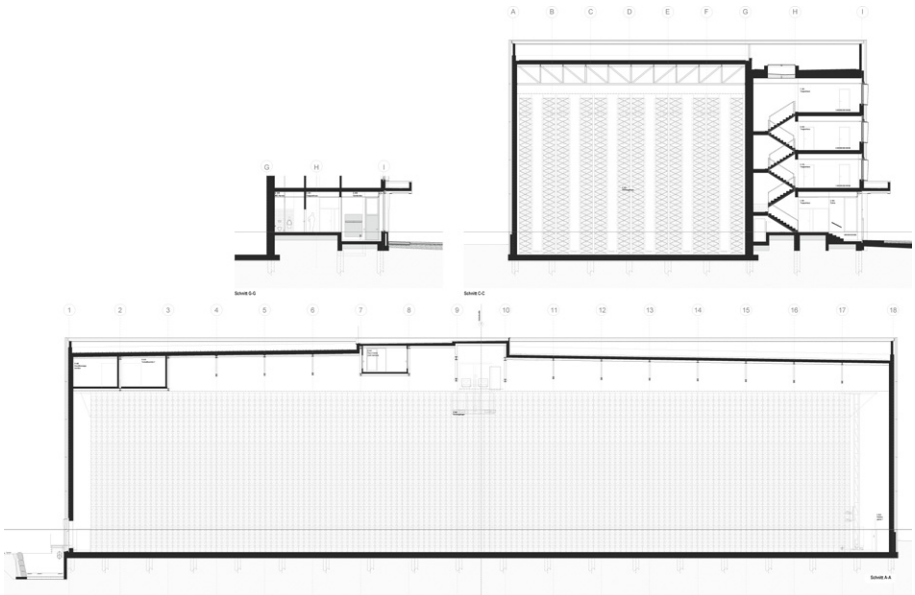


A work place for picking books form storage boxes and putting them back into the boxes.

© Ulrich Niederer



Groundfloor plan



Sections

# Hochschulbibliothek, Haus Tista Murk. Winterthur, Switzerland

## A General information

### a Name and address

- 1 university [University Of Applied Sciences]
- 2 Hochschulbibliothek, Haus Tista Murk / Zürcher Hochschule für Angewandte Wissenschaften
- 3 Turbinenstrasse 2, 8401 Winterthur
- 4 T 41-58 934 75 00; E winterthur.hsb@zhaw.ch
- 5 Dr. Wolfgang Giella
- 6 Wolfgang Giella, E giwo@zhaw.ch; T 41-58 934 65 87

### b Population served

- 7 10,056 [only for Winterthur in 2014, the ZHAW Library counts 15,873 users in 2014]
- 8 8,517 [only for Winterthur in 2014 and without the students of further education]
- 9 3,000 [estimate for Winterthur]
- 10 2,984 [the whole ZHAW]

### c The old/original building(s)

- 11 6,320 m<sup>2</sup>
- 12 744
- 13 160,000 volumes
- 14 140,000 volumes
- 15 40,000 volumes

16 17 [only for the Library in Winterthur]

17 53 in 5 weekdays

## B The new building

### a Architect(s)

18 P&B Partner Architekten

19 Hochbauamt des Kantons Zürich (Building office of the Zurich Canton)

20 Rebuilding of an historical industrial building

### b Aims of the new building

21 Close the five old small library locations in Winterthur.  
Provide new services for the students and the scientists.  
Extend the number of reader seats, workplaces and group rooms.  
Create a learning landscape with an activity-based conception of more than 1,700 square meters.

### c Special Features

- 22 The new library is situated near by the Winterthur central station.  
Currently the schools are in the distance from about 220 to about 800 meters to the library.
- 23
1. Rectangle plan of 100 × 16 m, complemented with a convex additional element of 100 × maximal 20 m, 20 m high.
  2. Red Eternit (cement asbestos) shingles as historical built volumes today red shngles without cement asbestos of equal form, Curtainwall-construction.
  3. House-in-house-construction
  4. Reduced energy costs standard
  5. Disabled access
  2. Listed building

## C Technical information

### a Floor area (24–35)

24 6,320 m<sup>2</sup>

Divided into

25 5,792 m<sup>2</sup>

Special rooms for (26–29)

26

27

28

29

Special activities (30–32)

30 60 m<sup>2</sup>

31 40 m<sup>2</sup>

32 382 m<sup>2</sup>

33 528 m<sup>2</sup>

34

35 1,300 m<sup>2</sup>

36 3 levels, 4 mezzanines

37 744

Divided into

38 113

39 40

40 13 [4 group rooms small for 4 persons = 16  
8 group rooms large for 8 persons = 64]

41 511

**b Total potential capacity of shelving**

42 133,500 volumes

Including

43 120,000 volumes

44 5,000 volumes

45 5,000 volumes

46 1,800 volumes

47 1,700 volumes

48 17



**c Mechanical features**

- 49 HVAC-System Climotion
- 50 HVAC-System Climotion
- 51 LED Spotlight  
Desk Lamps
- 52 Acoustic panels on the ceiling  
Synthetic caoutchouk ground
- 53 3 Lifts
- 54 none
- 55 RFID
- 56 Various systems
- 57
- 58 Selfcheck and sorter by InfoMedis  
Self pickup system

**D Schedule of the building process**

- 59 January 2011
- 60 ---
- 61 November 2011
- 62 January 2013
- 63 3 Years
- 64 November 2014 – January 2015
- 65 February 2015

**E Costs (including taxes)**

- 66
- 67 30,000,000 EUR [estimated]
- 68 5,500,000 EUR [estimated]
- 69
- 70

71

- 72 The costs are not exactly known because the whole project was realized by a public-private-partnership with a private investment company.

## F Publications & Awards

Eine neue Lern- und Servicebibliothek entsteht

Authors: Giella, Wolfgang; Jennifer Konkol

in: Arbido 4, 2014 p. 32–34.

[http://www.arbido.ch/userdocs/arbidoprint/Arbido\\_4\\_2014\\_Web.pdf](http://www.arbido.ch/userdocs/arbidoprint/Arbido_4_2014_Web.pdf)

SMART LEARNING – FÖRDERUNG VON EFFEKTIVEM LERNEN  
DURCH EIN AKTIVITÄTSORIENTIERTES RAUMKONZEPT IN DER  
BIBLIOTHEK

Authors: Giella, Wolfgang; Jennifer Konkol, Fabienne Schanné

in: Neue Lern- und Arbeitswelten, RBS Group Brochure, Munich 2015, S. 43–47



Back of the building © ZHAW



The front side of the building © ZHAW



One of two roof terraces © ZHAW

Hochschulbibliothek, Haus Tista Murk. Winterthur, Switzerland



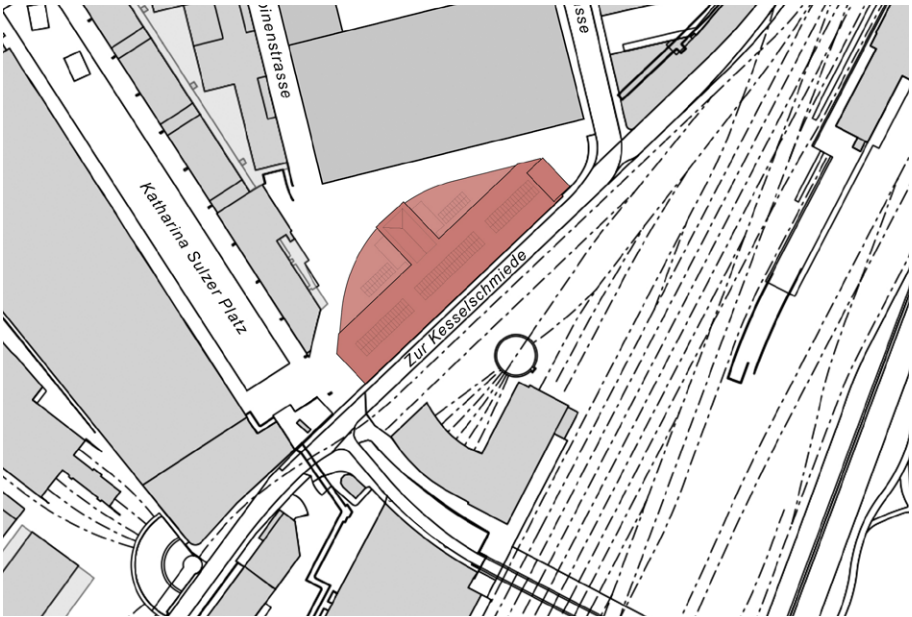
Main Stairs inside the Library © ZHAW



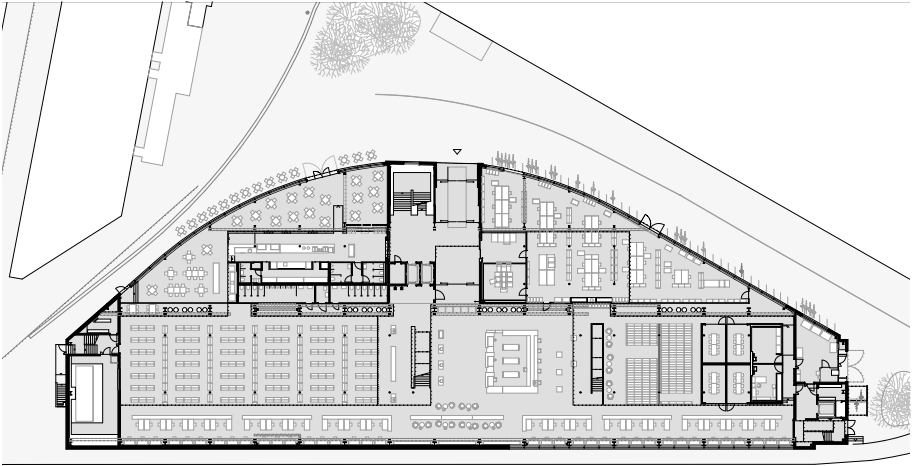
Learning Landscape Group Work Zone © ZHAW



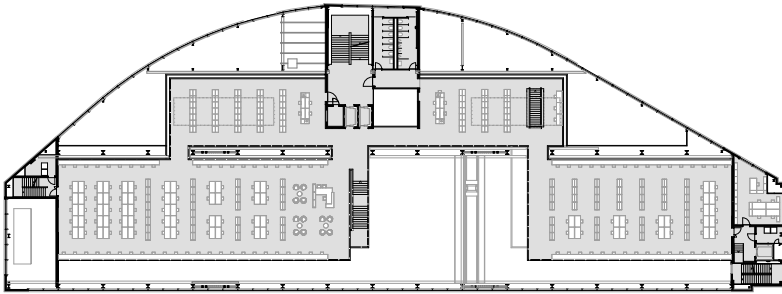
Workspace inside the library © ZHAW



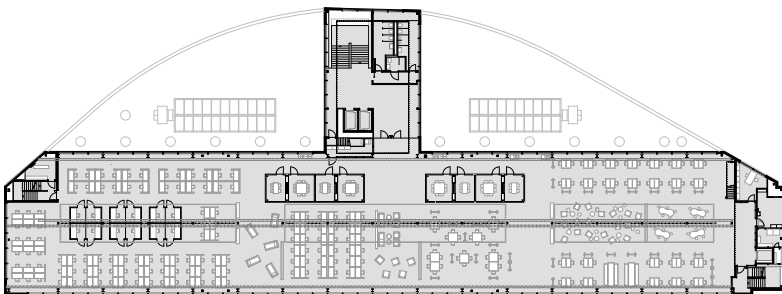
Site context plan © P & B Partner Architekten AG



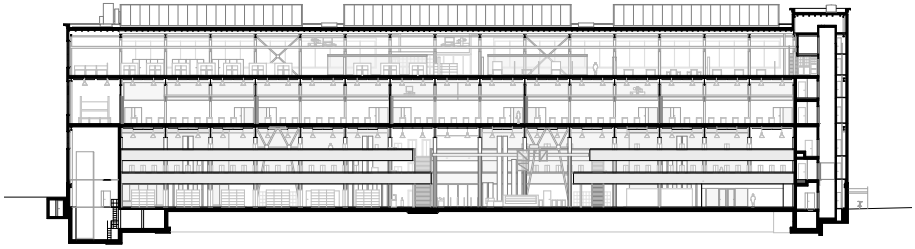
Plan ground floor © P & B Partner Architekten AG



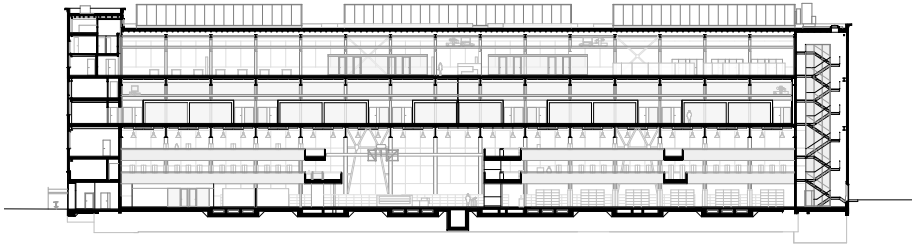
Plan mezzanine © P & B Partner Architekten AG



Plan floor 2 © P & B Partner Architekten AG



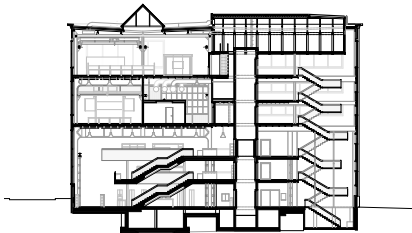
Schritt B-B 1:300



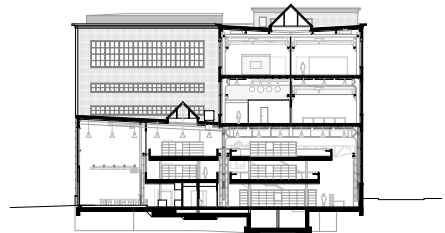
Schritt D-D 1:300



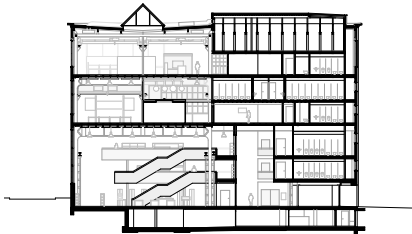
Cross sections © P & B Partner Architekten AG



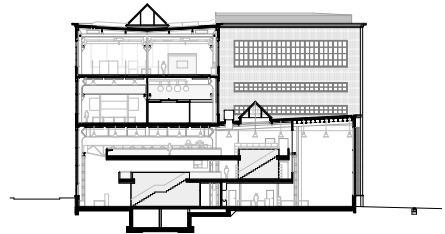
Schritt T-T 1:300



Schritt R-R 1:300



Schritt V-V 1:300



Schritt W-W 1:300



Cross sections © P & B Partner Architekten AG

# Stockwell Street Library.

## Greenwich, United Kingdom

### A General information

#### a Name and address

- 1 university
- 2 Stockwell Street Library / University of Greenwich
- 3 The Library, University of Greenwich, 10 Stockwell Street, Greenwich, SE10 9BD
- 4 T 020 8331 96660; E v.g.malone@gre.ac.uk
- 5 Paul Butler
- 6 Virginia Malone, E v.g.malone@gre.ac.uk

#### b Population served

- 7 9,340 [Greenwich Campus Library – Stockwell Street active borrowers 9,340]
- 8 16,078 [Total University population 16,078, for Greenwich Campus & Library 8,637 (fte)]
- 9 5,873 [Total University Population 5,873, – For Greenwich Campus & Library 1,484 (fte)]
- 10 1,710

#### c The old/original building(s)

- 11 2,426 m<sup>2</sup>
- 12 566
- 13 3,240 m
- 14 3,240 m
- 15



- 16 23 [In addition we employed student workers for shelving duties, IT support and we outsource for staffing cover for extended opening.]
- 17 110 hours a week. Core opening hours for students: 8/9am – Midnight. Over the academic year 13 weeks opening 24/7.

## B The new building

### a Architect(s)

- 18 Heneghan Peng architects
- 19 Roisin Heneghan & Shih-Fu Peng
- 20 new building

### b Aims of the new building

- 21 The acquisition of the Stockwell Street site and decision to use part of the space to create a new library meant that the library could be given additional and modernised space to meet the study and learning needs of our students and also release space in the old library (The Dreadnought Building) for new activities and refurbishment.

The University organised a 2-stage competition to design its main Library and an Academic building housing the Departments of Architecture & Landscape and Creative Professions & Digital Arts. The brief required an aspirational building while meeting the requirements of staff and students for teaching and research, embracing the local community and sitting easily within the World Heritage Site.

The new building brings the University off campus and into the heart of the town centre with a large library, educational spaces and other cultural activities. It has created a significant increase in footfall and vitality, helping local businesses and creating a truly mixed use town centre.

The building has the dual role of having to both embed itself as a piece of urban fabric to the south while making itself recognizable as a civic entity to the north. Its expression shifts in response to its context, appearing from Nevada St as a series of tightly packed volumes which blend into the streetscape; as one rounds the corner this fabric begins to pull apart, revealing the activity within and establishing the university's presence within the town as a space of academic excellence and urban connectivity.

## c Special Features

22 Located in the UNESCO World Heritage Site of Maritime Greenwich.

23 The Stockwell Street site is surrounded on two sides by 2–3 storey residential buildings, with the imposing presence of Hawksmoor’s Grade 1 listed St. Alfege Church across the road. To the North, a railway cutting slices through the traditional urban block.

The urban grain is drawn across the site, its dimensions related to natural light penetration, air movement & scale. The grain is further drawn through to the street to create a permeable streetscape.

The library is located to the north establishing a connection to the main university campus in the Old Royal Naval College. Cafe and exhibition spaces line Stockwell Street whilst at the corner opposite Hawksmoor’s St. Alfege Church, a slight setback creates a threshold, an entrance to the building and a pause in the street from which to turn with the church as its focus. The library is organised to create a space that visually & spatially interconnects the diverse activities within.

The building is compactly organised being highest on Stockwell Street and stepping down to meet the residences adjacent to its rear. Occupying the stepped roofs are fourteen interlinked teaching gardens which cover an area of about twelve tennis courts, probably Europe’s largest teaching and learning green roof.

The project has achieved a BREEAM ‘Excellent’ rating and Secure By Design accreditations. Inclusiveness in a broad sense was at the heart of the project, from opening up the University to the public to the detail of furniture and signage. Planning consent was granted in 2011, construction began in 2012 and the building opened as scheduled in September 2014.

## C Technical information

### a Floor area (24–35)

24 6,480 m<sup>2</sup>

Divided into

25 Entrance / Public Areas: 516 m<sup>2</sup>  
 Learning / Working Space: 3,802 m<sup>2</sup>  
 University Archive: 128 m<sup>2</sup>  
 Library workroom / book returns room: 35 m<sup>2</sup>  
 Total Net Usable Area: 4,875 m<sup>2</sup>

## Special rooms for (26–29)

- 26 Video Conference Room
- 27 IT equipped spaces in small clusters across all floors which avoids banks of computers.
- 28 University Archives
- 29 10no. Acoustically screened Group Study Rooms.  
2no. Academic Skills Workshop rooms.  
Open access to these rooms when not booked.

## Special activities (30–32)

- 30 Gallery, Retail and Exhibition space in adjoining Academic Building which are publically accessible.
- 31 Two lecture theatres in adjoining Academic Building which are publically accessible.
- 32 Cafe in adjoining Academic Building which are publically accessible.
- 33 Library Staff accommodation is located on the Third Floor of the Library.
- 34 Closed access stack are located in the Library Basement. (University Archives)
- 35 1,346 m<sup>2</sup> [Plant, Toilets, Stairs etc.]
- 36 5 levels
- 37 700

## Divided into

- 38 78 [Group Study Rooms]
- 39 311
- 40 72 [Academic Skills Lab]
- 41 239

**b Total potential capacity of shelving**

- 42 5,600 m
- Including
- 43 5,180 m
- 44 420 m

- 45 420 m [Included in item 44.]
- 46 30 m [AV Resources integrated.]
- 47
- 48 25 [In addition we employ student workers for shelving duties, IT support and we outsource for staffing cover for extended opening.]

### c Mechanical features

- 49 Natural ventilation is used where possible, complemented by highly efficient mechanical ventilation with heat recovery. The cooling demand is reduced through passive design, night-time ventilation for cooling, and thermal mass.
- 50 A central heating and cooling plant serves the whole development, with high-efficiency boilers and chillers. A detailed review of renewable technologies was undertaken and a combination of roof top Photovoltaics (150 m<sup>2</sup>) and solar thermal Panels have been used to reduce emissions further. PV panels and a solar hotwater system were selected as the most appropriate renewable energy sources to include in the design, taking into account the restricted access and historic context. These will account for about 1.5% of the savings on total CO<sub>2</sub> emissions.
- 51 The brief called for a development of about 16,000 m<sup>2</sup> with natural daylight for library, seminar and design studio spaces. To keep its height down, the building covers most of the site. Natural light and air are introduced via internal courtyards. Spaces requiring no natural light and mechanical ventilation are located in the basement and lower floors. Highly energy efficient lighting fittings and controls are utilised to further reduce energy demands.
- 52 Environmental noise measurements were carried out around the site. The main sources of environmental noise noted in the report were road traffic from the surrounding roads and train movement from the adjacent train line. Heavy traffic was noted along Stockwell Street and semi-regular rail activity was identified along the Network Rail Cutting. For this reason it was not suitable to have openings for ventilation to the railway, and those on Stockwell Street required attenuation.  
The control of noise & vibration from plant and equipment were an important consideration, both within the building and to outside. All Air Handling Units are located in the basement level of the development, so have no noise impact on neighbours. The mechanical cooling plant (two cooling units) are located at the highest roof level,

enclosed, and away from accessible roof areas and neighbouring buildings.

- 53 2 lifts
- 54 Bibliotheca Smart Return Book Sorter 300 Series
- 55 Smartgate RFID by Bibliotheca
- 56 Services are strategically 'metered' so as to allocate energy use and provide feedback to assist in improved operation A programmable open-network type Building Management System (BMS) of modular design was installed to provide automatic control. The system is provided with the capacity to extend to control elements of the existing site, as well as a minimum of 15% spare capacity for future extensions or needs. The BMS is capable of remote access via the internet for revision of set points, time clocks and monitoring of the system, via the central supervisor, located in the Facilities Management office.

A high level link is provided to connect the BMS to the ITC network to allow users to monitor the system operations without the ability to modify settings. This allows access for users to view the parameters from around the building but protects the settings within the system from modification by unauthorised personnel. All systems are metered and monitored by the BMS in order determine the energy used as per the requirements of Part L of the building regulations. The BMS controls and monitors the status of the mechanical, electrical and public health engineering systems other than fire alarms, and security systems.

- 57 Each floor is provided with 13A switched socket outlets for connection into wireless LAN equipment within the ceiling void.
- 58 The new building achieved a BREEAM 'Excellent' rating. The development goes beyond BREEAM requirements and provides 140 bicycle parking spaces, with showers and lockers provided within the building. There is no parking provided on site, except for limited accessible parking, and electrical charging points will be provided for University vehicles.

The roof spaces are an important element in the sustainable agenda of the new building. Almost all of the roof surfaces will be planted, either intensively or extensively. As well as providing a habitat for a variety of flora and fauna the roofs have become a learning resource for the University's landscape department.

## D Schedule of the building process

- 59 Scheme design Sept 2009 to June 2010

- 60 July 2009 to September 2009
- 61 Detail design June 2010 to July 2011, tender July 2011 to December 2011
- 62 March 2012
- 63 September 2014 (30 months)
- 64
- 65 September 2014

## E Costs (including taxes)

- 66 11,700,000 EUR [£9m inclusive of VAT]
- 67 55,330,000 EUR [£42,584,000 exclusive of VAT (excludes £3,224,000 of enabling works including demolition)  
£2,560 per m<sup>2</sup> (3,320 EUR per m<sup>2</sup>)]
- 68 5,206,382 EUR [£4,007,000 exclusive of VAT  
£240 per m<sup>2</sup> (312 EUR per m<sup>2</sup>)]
- 69 10,070,000 EUR [£7,750,000 exclusive of VAT (including utilities)]
- 70 82,300,335 EUR [£63,341,000 exclusive of VAT]
- 71 1,560,000 EUR [£1,200,000 inclusive of rates, utilities and maintenance (estimate)]
- 72 Public commission, funded from University of Greenwich reserves

## F Publications & Awards

- BREEAM 'Excellent' rating
- RIBA London Regional Award 2015
- RIBA National Award 2015
- RIBA Stirling Prize nominee 2015
- RIAI Best International Project 2015
- Civic Trust Award 2016
- London Planning Awards – Best Town Centre Project 2015



View of Stockwell Street © Hufton+Crow



View of Library Facade © Hufton+Crow

Stockwell Street Library. Greenwich, United Kingdom

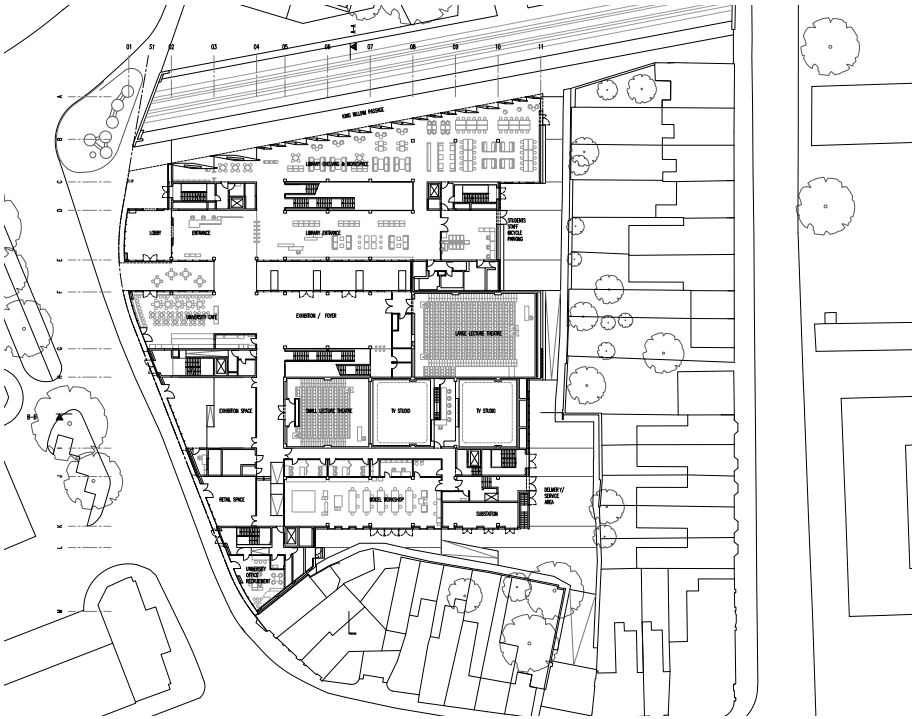


View of Library Interior © Hufton+Crow



View of Library Interior © Hufton+Crow



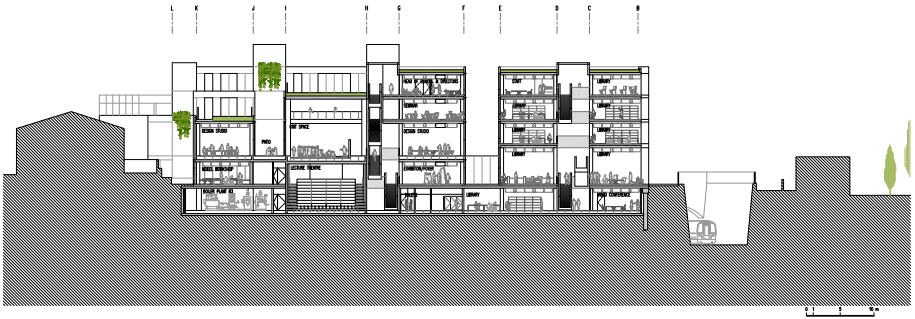


Ground Floor Plan © heneghan peng architects

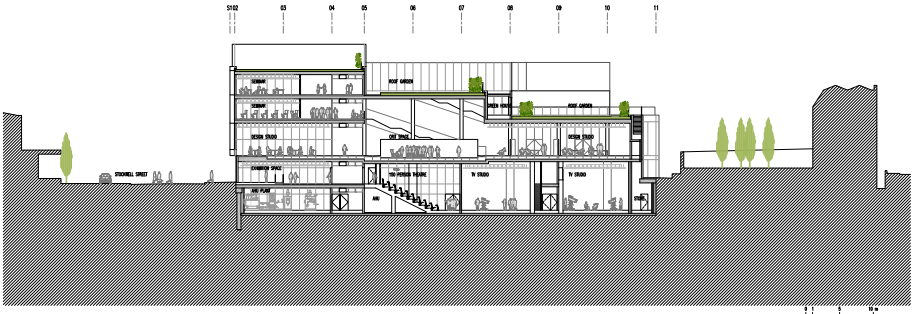


Third Floor Plan © heneghan peng architects

Stockwell Street Library. Greenwich, United Kingdom



Section AA © heneghan peng architects



Section BB © heneghan peng architects



Plan of Roof Landscape © heneghan peng architects

# The Laidlaw Library.

## Leeds, United Kingdom

### A General information

#### a Name and address

- 1 university [Leeds University Library comprises 5 libraries, 2 galleries and 7 stores. The Laidlaw Library is its newest library building.]
- 2 The Laidlaw Library / University of Leeds
- 3 Woodhouse Lane, Leeds. LS2 9JT
- 4 T 0113 343 5663 ; E library@leeds.ac.uk
- 5 Dr. Stella Butler
- 6 Jane Saunders, E library@leeds.ac.uk; T 0113 343 5663

#### b Population served

- 7 62,000
- 8 28,752
- 9 3,154
- 10 7,726

#### c The old/original building(s)

- 11 25,372 m<sup>2</sup> [This includes public areas and closed stores.]
- 12 3,897
- 13 93,400 m
- 14 54,034 m
- 15 39,366 m
- 16 145

- 17 Dependant on time of year. Term: Mon – Thurs 8am – midnight, Fri 8am – 7pm, Sat 10am – 5pm / midnight (one library). Exams 24/7

## B The new building

### a Architect(s)

- 18 ADP Architects  
19 Joe Morgan  
20 new building

### b Aims of the new building

- 21 Provision of additional study space, and also modern facilities able to support students using their own devices, working either on their own or in groups.

### c Special Features

- 22 On the main University campus, with two entrances, one onto campus, and the other onto a main road passing the University entrance.

The building form is roughly rectangular, but is designed to fit the existing site, located between 2 listed churches and 2 roads to front & rear. Level access is provided from Woodhouse lane maximising accessibility across a site with difficult topography of a 3m drop. This level enables a lower ground floor accessible from Hillary place.

The ground floor is predominantly open access for social learning, cafe spaces with secure access to training rooms and the community classroom.

Upper levels are predominantly open plan, maximising flexibility with a central WC and lift core, with quiet study and bookstock being located on the top three floors.

The floor plates of the building are simple and flexible, with an insitu concrete frame and floor slabs, ensuring that the accommodation can be altered and adapted easily in the future. The use of insitu concrete also provides thermal mass to aid temperature control.

External walls are solid Portland stone on an insulated reinforced concrete backing, with plastered blockwork internally.

High performance double glazed windows.

All levels fully accessible with purpose designed accessible teaching rooms, wash rooms & toilets.

The building is designed to the University's Sustainable Construction Guide with insulation levels 25% better than building regulations & air tightness 4 times better. Other features;

- › Automatic lighting system to supplement and enhance daylight levels and through absence detection via PIRs
- › LED lighting
- › Displacement air system
- › Energy efficient plant and system selection with heat recovery
- › District heating system utilising UoL steam main
- › Use of revolving doors to maintain air tightness
- › The use of low flush toilets with dual flush, push taps
- › each toilet area linked to an infra-red movement detector.
- › Green roof areas.
- › 225 m<sup>2</sup> photovoltaic (PV)

## C Technical information

### a Floor area (24–35)

23 6,278 m<sup>2</sup>

Divided into

24 4,049 m<sup>2</sup>

Special rooms for (26–29)

25

26 There are PCs for group and individual use, but these are counted with in the reading spaces.

27 These are housed in the University's Brotherton Library

28 443 m<sup>2</sup> [This includes 4 teaching / seminar rooms and 8 group study rooms.]

Special activities (30–32)

29 There are digital display screens in the circulation spaces and a media wall at the entrance.

30

31 140 m<sup>2</sup>

32 485 m<sup>2</sup>

33

34 1,161 m<sup>2</sup>

35 The building has 5 levels. The lower ground floor is for staff accomodation. Ground to 3rd floor are open to library users.

36 946

Divided into

37 2 [Video/dvd players]

38 195 [For use by library users. In addition there are 24 loanable laptops.]

39 There are 4 teaching rooms, and also 8 bookable group study rooms.

40 351 [351 quiet study spaces, 162 teaching room spaces, 290 group work spaces, 143 social learning and café spaces.]

#### **b Total potential capacity of shelving**

41 5,000 m [The Laidlaw Library contains the core text and high demand collections, which comprise items on student reading lists.]

Including

42 5,000 m

43

44

45 280 m

46

47 24 [Includes security staff, shelvers, customer services assistants and managers across all opening hours. Not included are cleaning or café staff.]

#### **c Mechanical features**

48 Variable air volume mechanical ventilation, delivered via raised access floor. Passive ventilation not viable due to adjacent traffic.

49 Primary heating plant takes advantage of the new incoming steam and condensate supply which serves the University.

50 Low energy high efficiency T5 linear fluorescent lamps, compact fluorescent lamps and LED light sources.

51 Building has a sealed envelope & revolving doors to insulate against external noise. Acoustic baffles are suspended throughout

52 2 lifts for library users, 1 staff lift, 1 entrance lift for disabled users. The lifts are supplied by Otis.

- 53 3M 7 bin booksorter, trolleys used in buildings, van service operates between the libraries.
- 54 3M magnetic tape system in use.
- 55 Trend IQ4 provides control, alarm detection, scheduling, reporting and information management for the connected building services, plant and systems.
- 56 Cat 6a cabling, 1GB to desktop and 20GB capacity to building, 80 MBs AC wireless throughout.
- 57

## **D Schedule of the building process**

- 58 New build library, with approximately 1,000 study seats, with access to power and data, and 5,000m of stock.
- 59 Single stage competitive tender following OJEU procurement process.
- 60 Autumn 2011 – May 2015
- 61 August 2013
- 62 April 2015
- 63 April 2015 – June 2015
- 64 27th May 2015

## **E Costs (including taxes)**

- 65 University owned. Site clearance and relocation of Security building £938,000
- 66 27,030,400 EUR [£20,653,000. Including AV (subject to agreement of final account)]
- 67 1,417,400 EUR [£1,083,000]
- 68 £3,326,000
- 69 £26,000,000 (subject to agreement of final account)
- 70 £408,000 (staffing and maintenance per year)
- 71 University funded, with significant donations from alumni.



Laidlaw Library at Dusk © Wincona



Floorplan – ground © University of Leeds





Floorplan – level-1 © University of Leeds



Floorplan – level-2 © University of Leeds



Floorplan – level-3 © University of Leeds

# Liverpool Central Library & Archive.

## Liverpool, United Kingdom

### A General information

#### a Name and address

- 1 public [Public library and archive]
- 2 Liverpool Central Library & Archive / Liverpool City Council
- 3 William Brown Street, Liverpool, L3 8EW
- 4 T 0151 233 5835, F 0151 207 4870;  
E libraries.enquiries@liverpool.gov.uk
- 5 David Stoker
- 6 David Stoker, E dastoker@hotmail.co.uk

#### b Population served

- 7 70,000 [750,000 visitors p.a., circa 70,000 registered readers]
- 8 NA
- 9 NA
- 10 6,000 [Circa 6,000 Council employees]

#### c The old/original building(s)

- 11 19,000 m<sup>2</sup>
- 12 350
- 13 35,000 m
- 14 7,000 m

- 15 28,000 m
- 16 54
- 17 60 hours per week and 355 days per year

## B The new building

### a Architect(s)

- 18 Austin-Smith Lord
- 19 Ben Aston
- 20 Partial demolition, partial new-build, and restoration

### b Aims of the new building

- 21 A new and more prominent entrance with improved landscaping and signage and a 24 hour book return facility.

A dramatic atrium which brings in daylight and invites people to understand what is on offer and to explore the whole building fully.

Improved links to historic buildings such as the magnificent Picton Reading Room, Hornby Library and Oak Room, which have been fully restored and returned to their original glory. They are now open at all times when the library is open and include showcases to display archives as well as the library's extensive special collections.

Increased numbers of computers and some I-Pads with free access and 100% Wi-Fi coverage inside and outside the premises.

Increased numbers of self-service machines.

An excellent Children's Library and performance space in a restored area of the building which had been closed off for some years.

A purpose-built standalone repository which meets all aspects of BS5454:2000. As well as an electronically powered mobile shelving system installed by Bruynzeel, the repository has four hour fire protection and an automatic gas fire suppression system. For the first time, there is a Document Reception area and vastly improved staff accommodation includes a well-equipped Conservation Studio and a Cataloguing Room, both benefiting from natural northern light.

More spacious archive visitor facilities including a sound-attenuated interview room for confidential enquiries, more pcs, a display space including new showcases, and a well-equipped, sound-attenuated Searchroom.

A cafe with an external ground floor terrace attracting users to the building and animating the street.

A roof terrace open to all users with panoramic views across the city and over the restored historic buildings.

A high standard of accessibility throughout the building, baby change facilities on almost every floor and an adult change facility, and induction loops.

A combination of well-equipped meeting rooms.

### c Special Features

**22** The library is located in Liverpool city centre. It is in the Cultural Quarter of the city and on the Liverpool World Heritage Site. World Museum Liverpool is on one side and The Walker Art Gallery on the other side. The neo classical buildings are near to St George's Hall.

**23** A blend of old and new on an existing site which is a Grade 2\* listed building. There is a rectangular new-build public space behind an original 1860s façade with poured in-situ concrete. This has a spectacular atrium with a wow factor and off-set staircases to bring in daylight and encourage people to explore the building fully. There are also north and south light-wells. In addition, there is a rectangular new-build repository with poured in-situ concrete, double thickness walls and aluminium cladding. This meets archive standards such as PD5454 for storage and long-term preservation of archives and special collections. There is a restored magnificent circular 19th century reading room and adjoining restored early 20th century buildings. Underneath this is a circular room dating from 1880 which has been restored and converted for use as a children's library and also as a lecture hall and performance space. There is a refurbished 1930s library closed access stack.

It is a fully accessible building.

The BREEAM rating of very good has been achieved for both new and historic areas.

## C Technical information

### a Floor area (24–35)

**24** 16,000 m<sup>2</sup>

Divided into

**25** 12,000 m<sup>2</sup>

Special rooms for (26–29)

**26**

27

28 445 m<sup>2</sup>29 215 m<sup>2</sup>

## Special activities (30–32)

30 300 m<sup>2</sup> [Approx. 300 m<sup>2</sup>; 20 showcases – some in historic areas and some in new-build; various exhibition spaces in new-build.]31 692 m<sup>2</sup> [Flexible space also used as a children's library]32 208 m<sup>2</sup> [Café run by third party operator]33 520 m<sup>2</sup> [Mezzanine floor]34 1930s library stack refurbished = 1,100 m<sup>2</sup>, and new state of the art repository built to meet PD5454 for archives and special collections = 2,100 m<sup>2</sup>.

35

36 4 floors

37 500

Divided into

38

39 160

40 see 29

41

**b Total potential capacity of shelving**

42 35,000 m [includes archives]

Including

43 10,000 m

44 25,000 m

45 17,000 m [included in 44]

46 300 m

47

48 38

**c Mechanical features**

49

50

51

52

53 Escalator, two passenger lifts and four staff lifts

54 Trolleys

55 CCTV and book tags (3M system)

56

57 Category 6A cabling plus Wi-Fi

58

**D Schedule of the building process**

59

60 Private Finance Initiative process; OJEU advert; EU competitive dialogue

61

62 November 2010

63 April 2013

64

65 17 May 2013

**E Costs (including taxes)**

66 Existing, no costs

67 55,000,000 EUR [Approx. £42 M]

68 Included in above

69 Included in above

70

71

72 Department of Culture, Media and Sport £50 million PFI credits

## F Publications & Awards

### Best Technical Innovation Project of the Year

Local Authority Building Control Building Excellence Awards 2013, NW Regional Award  
Winner – Best Technical Innovation Project of the Year, LABC June 2013

### Best Technical Innovation Scheme of the Year

Local Authority Building Control Building Excellence Awards 2013, National Award Winner  
Best Technical Innovation Scheme of the Year, LABC November 2013

### RIBA NW Region Conservation Award 2014

Royal Institute of British Architects NW Region Conservation Award 2014  
RIBA NW April 2014

### RIBA NW Regional Award 2014

Royal Institute of British Architects NW Regional Award 2014  
RIBA NW April 2014

### 2014 NW Regional Winner for Best Tourism and Leisure Project

Royal Institution of Chartered Surveyors 2014 NW Regional Winner for Best Tourism and  
Leisure Project  
RICS NW May 2014

### 2014 NW Regional Winner for Project of the Year

Royal Institution of Chartered Surveyors 2014 NW Regional Winner for Project of the Year  
RICS NW May 2014

### 2014 National Award Civic Building of the Year Award 2014 – Winner for Regeneration

SCALA (Society for Construction and Architecture in Local Authorities) 2014 National Award  
Civic Building of the Year Award 2014 – Winner for Regeneration, SCALA November 2014

### Runner-up for Project of the Year APM November 2013

Association for Project Management – National Award – Runner-up for Project of the Year  
APM November 2013

### Large Visitor Attraction of the Year

Liverpool City Region Tourism Awards 2014 – Large Visitor Attraction of the Year  
Highly Commended  
May 2014

### No 1 Ranked Visitor Destination in Liverpool Area

Trip Advisor No 1 Ranked Visitor Destination in Liverpool Area 2013 and 2014 with a  
Certificate of Excellence and Five Star rating – first out of 136 venues

### Top 10 UK Landmark

Trip Advisor – Top 10 UK Landmark, 2014  
Trip Advisor Certificate of Excellence and Five Start Rating, 2015



## Landscape Institute Awards

Landscape Institute Awards – Highly Commended in the category of Design for a small scale public development

Landscape Institute 2014



The Picton Reading Room at Liverpool Central Library © Liverpool Central Library

Liverpool Central Library & Archive. Liverpool, United Kingdom



Liverpool Central Library Entrance © Liverpool Central Library

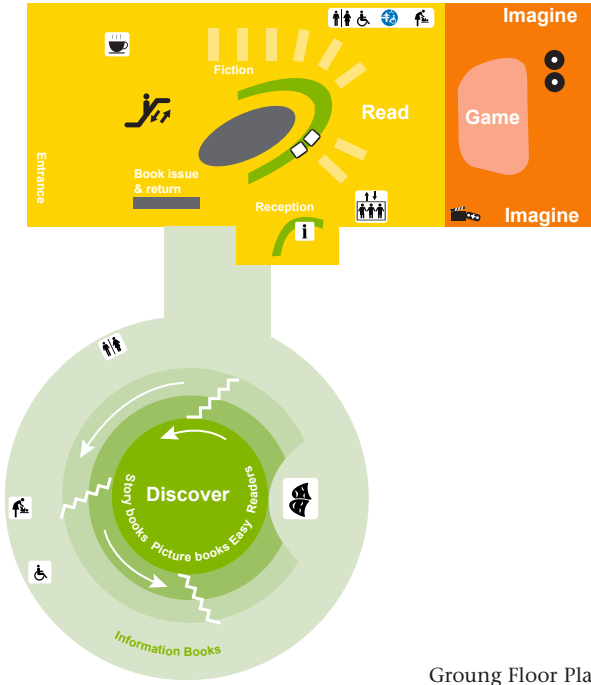


Looking down the new-build section © Liverpool Central Library

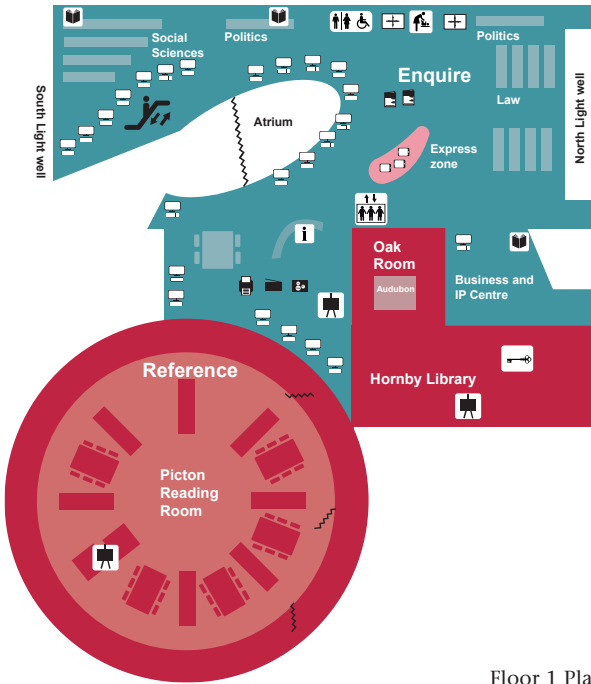


An interior view of the new-build section © Liverpool Central Library

Liverpool Central Library & Archive. Liverpool, United Kingdom

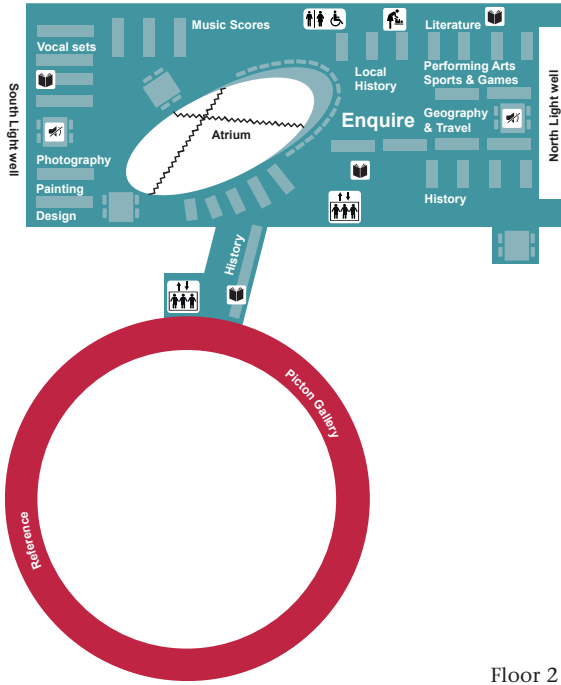


Ground Floor Plan © Austin-Smith Lord Architects

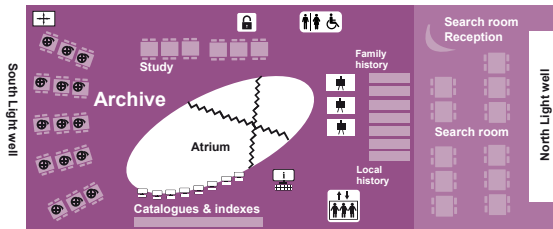


Floor 1 Plan © Austin-Smith Lord Architects

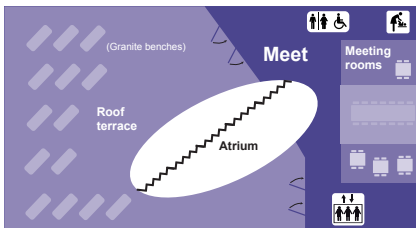




Floor 2 Plan © Austin-Smith Lord Architects



Floor 3 Plan © Austin-Smith Lord Architects



Floor 4 Plan © Austin-Smith Lord Architects

# Oxford Brookes University Headington Library. Oxford, United Kingdom

## A General information

### a Name and address

- 1 university
- 2 Oxford Brookes University Headington Library / Oxford Brookes University
- 3 John Henry Brookes Building, Headington Campus, Oxford OX3 0BP
- 4 T +44 (0)1865 483156; E library@brookes.ac.uk
- 5 Dr Helen Workman
- 6 Jan Haines, E jan.haines@brookes.ac.uk; T +44 (0)1865 483131

### b Population served

- 7 19,200
- 8 13,300
- 9 4,100
- 10 1,800

### c The old/original building(s)

- 11 4,500 m<sup>2</sup>
- 12 598
- 13
- 14
- 15

16 58

17 29 weeks @ 121 hours per week, and 21 weeks @ 78 hours per week

## B The new building

### a Architect(s)

18 Design Engine Architects Ltd, The Studios, Coker Close, Winchester SO22 5FF

19 Richard Jobson

20 new building

### b Aims of the new building

- 21 The library in the university's new award-winning John Henry Brookes building opened in February 2014. We wanted to create a new experience for our users by providing a library that would:
- › be an inspirational space for study, learning and research
  - › provide easy access to information resources, both printed and electronic
  - › be fully IT enabled
  - › be easy to navigate
  - › be both welcoming and secure
  - › provide a range of working space for users: silent, quiet, social, group
  - › provide an uplifting working environment for LR staff
  - › facilitate the development of improved services
  - › take into account the needs of self-service operation

Key to the building's development was the overall aim to bring together a number of previously distributed services to improve the user experience. The openness and permeability of the design means that library users have easy access to a range of range of other facilities including Careers, Student Central, the Students' Union, as well as social learning areas, teaching rooms and catering.

### c Special Features

- 22 The building is located on the University's main Headington campus. The north elevation overlooks the main entrance and piazza while the west elevation overlooks adjacent parkland.
- 23 The library is an inspiring place for students to study, with lots of light, airy spaces and reading rooms with fantastic views. Vistas and permeability

were important elements of the design. So, the library, which has a presence over six floors, wraps around a central atrium which is given over to a multifunctional social learning space and café. This area, called the Forum, extends the learning spaces which thread through the library.

The general collections sit on the upper floors where students can choose from a variety of quality learning spaces, with access to university PCs or power sockets for their mobile devices (all spaces have power sockets and wi-fi is pervasive). There are student presentation rooms, equipped with the same IT provision and book visualisers as in the teaching rooms, allowing students to rehearse their presentations in advance.

Part of the library extends across the top of the central lecture theatre, providing an informal area for groups to work in. This area, called the Platform, has specially designed furniture to make working together easier, with large screens, whiteboards, casual seating with views across the Forum, as well as vending machines to keep the students refreshed.

Library offices are located across the floors and support is provided via a HelpZone which includes a coaching area with AV equipment for drop-in tuition or small group introductory sessions. Nearby, a self-service cabinet allows students to borrow Google Chromebooks free of charge.

To optimise space, electronic mobile shelving has been used for some of the general collection but its main success has been in the journals, archive and special collections areas.

Other significant services include two training rooms, a graphics studio with computers and facilities dedicated to design, and an assistive technology suite with tuition areas and one-to-one rooms.

## C Technical information

### a Floor area (24–35)

24 6,400 m<sup>2</sup>

Divided into

25 5,750 m<sup>2</sup>

Special rooms for (26–29)

26

27 PCs are located in study areas throughout the library. Chromebook laptops are also available on free loan.



- 28 355 m<sup>2</sup> [These include the Booker Prize Archive, National Brewing Library, Jane Grigson Collection, Ken Hom Library, and the Andre Deutsch Collection]
- 29 200 m<sup>2</sup> [Includes 3 student presentation rooms, 2 training rooms and 1 student meeting room]

Special activities (30–32)

30

31

32 Catered and vended services are available throughout the building

33 650 m<sup>2</sup>

34

35

36 Services and facilities are spread over 6 floors

37 988

Divided into

38

39 269 [Includes open and silent area PCs]

40 56 [Includes 3 student presentation rooms, 2 training rooms and 1 student meeting room]

41 663 [Agile mix of silent, quiet and group zones, with individual and social learning spaces]

**b Total potential capacity of shelving**

42 7,820 m

Including

43 5,461 m

44 2,359 m

45 Used for open and closed access and is Included in 43 and 44.

46

47

48 57

### c Mechanical features

- 49 Exposed thermal mass (concrete), cools the building by absorbing heat during the day which is removed overnight.
- 50 Similarly, heat is stored by the concrete during the winter, helping to maintain a comfortable temperature for building users.
- 51 Daylight is maximised throughout the building, with large windows a feature of all reading rooms.
- 52 Acoustic baffles absorb sound, reducing overall noise in open spaces.
- 53 2 (1 for public use and 1 for staff use)
- 54 Manual trolleys
- 55 3M detection
- 56 A combined heat and power plant helps to achieve a double-figure percentage reduction in overall energy consumption.
- 57
- 58 Other features including solar panels, a 'green' planted roof and recycling of rainwater help to reduce the building's environmental footprint.

## D Schedule of the building process

- 59 2007
- 60 2006
- 61 3 years
- 62 January 2011
- 63 February 2014
- 64
- 65 Library opened 26 February 2014

## E Costs (including taxes)

- 66
- 67
- 68

69

70

71

72

## F Publications & Awards

RIBA (Royal Institute of British Architects): National Award  
awarded June 2014

RIBA (Royal Institute of British Architects) South/South East: Building of the  
Year Award  
awarded May 2014

RIBA (Royal Institute of British Architects) South/South East: Sustainability  
Award  
awarded May 2014

Education Estates Awards: Student Experience Award  
awarded November 2014

Oxford Preservation Trust: New Building Award  
(awarded November 2014)



View of the library's south west elevation © Nick Kane / Oxford Brookes University

Oxford Brookes University Headington Library. Oxford, United Kingdom



Night view of the front of the building, with reading rooms visible in centre of shot

© Nick Kane / Oxford Brookes University



View towards reading rooms and ground floor Forum space  
© Paul Tait / Oxford Brookes University



Working in a reading room © Paul Tait / Oxford Brookes University

L

# Questionnaire:

## Description of New University and Research Library Buildings in Europe

### A General information

#### a Name and address

- 1 Type of library:
- 2 Name of library / Name of mother institution
- 3 Address:
- 4 Phone, Fax and E-mail:
- 5 Name of the director of the library:
- 6 Contact person for enquiries, E-mail, Phone:

#### b Population served

- 7 Current readership, number of registered readers:
- 8 Number of full time students:
- 9 Number of part time students:
- 10 Number of staff in institution:

#### c The old/original building(s) before the new project before the new project

- 11 Total floor area:
- 12 Number of reader seats:
- 13 Total capacity of shelving:
- 14 in open access storage:

- 15 in closed access stacks:
- 16 Number of library staff (full time equivalent):
- 17 Opening hours to the public:

## **B The new building**

### **a Architect(s)**

- 18 Firm:
- 19 Project architect:
- 20 Type of project:

### **b Aims of the new building**

- 21 Short description of the main objectives and purposes of the project:

### **c Special Features**

- 22 Site:
- 23 Architecture:

## **C Technical information**

### **a Floor area**

- 24 Total gross floor area (incl. corridors, stairs, lifts, technical rooms, etc):

Divided into

- 25 Open access services (reference room, reading rooms, holdings - books and periodicals, circulation and information desks, etc.):

Special rooms for:

- 26 Audiovisual:
- 27 Computers:
- 28 Special collections:
- 29 Seminar room(s) (group study, training rooms)

Special activities:

- 30 Exhibition space:



- 31 Lecture hall:
- 32 Public refreshments:
- 33 Administration and staff areas:
- 34 Closed access stacks:
- 35 Circulation areas (corridors, stairs, lifts, toilets, technical rooms, etc):
- 36 Further information:
- 37 Number of reader seats (total):

Divided into

- 38 Audiovisual:
- 39 Computer places:
- 40 Seminar room(s):
- 41 Regular:

#### **b Total potential capacity of shelving**

- 42 Books and periodicals (total):

Including

- 43 Open access stacks:
- 44 Closed access stacks:
- 45 Compact shelving:
- 46 Audiovisual materials:
- 47 Other:
- 48 Number of staff required to operate the new library (full-time equivalent):

#### **c Mechanical features**

- 49 Ventilation/Air Conditioning:
- 50 Heating:
- 51 Lighting:
- 52 Acoustics:
- 53 Lifts, elevators, escalators:

- 54 Book transportation system:
- 55 Theft detection:
- 56 Building management system:
- 57 Type of IT infrastructure (network type and capacity):
- 58 Other:

## **D Schedule of the building process**

- 59 Planning, preliminary brief:
- 60 Architectural competition:
- 61 Period of project:
- 62 Opening of the construction work:
- 63 Conclusion of the building work:
- 64 Furnishing and moving the collection:
- 65 Opening of the new building for public:

## **E Costs (including taxes)**

- 66 Site:
- 67 Building:
- 68 Furniture and equipment:
- 69 Fees:
- 70 Total:
- 71 Operating costs:
- 72 Funding:

## **F Publications and Awards**

# Questionnaire : sur les nouveaux batiments de bibliotheques universitaires et de recherche en Europe

## A Informations générales

### a Nom et adresse

- 1 Type de bibliothèque :
- 2 Nom de la bibliothèque / Nom de la maison-mère :
- 3 Adresse :
- 4 Numéros de téléphone, fax et e-mail :
- 5 Nom du directeur de la bibliothèque :
- 6 Personne à contacter, e-mail, téléphone :

### b Population desservie

- 7 Nombre de lecteurs inscrits :
- 8 Nombre d'étudiants à plein temps :
- 9 Nombre d'étudiants à temps partiel :
- 10 Nombre de personnel :

### c Situation de la bibliothèque avant le nouveau projet

- 11 Superficie totale :
- 12 Nombre de places de consultation :
- 13 Capacité totale de stockage :
- 14 Collections en libre accès :

- 15 Collections en magasins fermés :
- 16 Nombre de personnel de la bibliothèque (équivalent plein temps) :
- 17 Ouverture au public :

## **B Le nouveau bâtiment**

### **a Architecte(s)**

- 18 Agence :
- 19 Chef de projet :
- 20 Type de projet :

### **b Buts du nouveau bâtiment**

- 21 Brève description des principaux objectifs et raisons d'être du projet :

### **c Caractéristiques**

- 22 Site :
- 23 Architecture :

## **C Informations techniques**

### **a Surface**

- 24 Surface totale (inclus couloirs, escaliers, ascenseurs, locaux techniques etc.; en mètres carrés) :

Divisée en

- 25 Services en libre accès (salle de références, salles de lecture, patrimoine – livres et périodiques, bureaux d'accueil et service de prêt, etc.) :

Salles spéciales pour :

- 26 Audiovisuel :
- 27 Informatique :
- 28 Collections spécialisées :
- 29 Salle(s) d'étude : pour groupes, formation

Salles pour autres activités :

- 30 Espace d'exposition :

- 31 Salle de conférence :
- 32 Cafétéria :
- 33 Administration et locaux réservés au personnel :
- 34 Magasins fermés :
- 35 Zones de circulation (couloirs, escaliers, ascenseurs), sanitaires, locaux techniques, etc. :
- 36 Autres informations :
- 37 Nombre de places de lecture (total) :  
Divisé en
- 38 Audiovisuel :
- 39 Informatique :
- 40 Salle(s) de formation/réunion :
- 41 Places de travail :

#### **b Capacité potentielle totale de stockage**

- 42 Livres et périodiques (total) :  
Inclus :
- 43 En libre accès :
- 44 En magasins fermés :
- 45 Dont en rayonnages mobiles :
- 46 Documents audiovisuels :
- 47 Autres :
- 48 Nombre de personnel nécessaire pour faire fonctionner la nouvelle bibliothèque (équivalent plein temps) :

#### **c Caractéristiques techniques**

- 49 Ventilation/Climatisation :
- 50 Chauffage :
- 51 Eclairage :
- 52 Acoustique :
- 53 Ascenseurs, monte-charges, escalators :

- 54 Système de transport automatique de documents :
- 55 Détection antivol :
- 56 Gestion informatisée du bâtiment :
- 57 Type d'infrastructure informatique :
- 58 Autres :

## **D Échéancier de réalisation**

- 59 Élaboration du programme :
- 60 Concours d'architecture :
- 61 Durée d'élaboration du projet :
- 62 Démarrage des travaux de construction :
- 63 Fin des travaux de construction :
- 64 Ameublement et déménagement des collections :
- 65 Date d'ouverture du nouveau bâtiment au public :

## **E Coûts**

- 66 Terrain :
- 67 Bâtiment :
- 68 Mobilier et équipement :
- 69 Honoraires :
- 70 Total :
- 71 Coûts des opérations :
- 72 Financement :

## **F Publications et récompenses**

# Fragebogen: Neue Gebäude von Universitätsbibliotheken und Wissenschaftlichen Bibliotheken

## A Allgemeine Informationen

### a Name und Adresse

- 1 Bibliothekstyp:
- 2 Name der Bibliothek / Name der Trägereinrichtung:
- 3 Adresse:
- 4 Telefon- und Faxnummer, E-Mail-Adresse :
- 5 Name des Direktors / der Direktorin der Bibliothek:
- 6 Kontaktperson, Telefonnummer, E-Mail-Adresse:

### b Publikum

- 7 Anzahl der angemeldeten Bibliotheksbenutzerinnen und Benutzer:
- 8 Anzahl der Vollzeit-Studierenden:
- 9 Anzahl der Teilzeit-Studierenden:
- 10 Anzahl der Beschäftigten in der Einrichtung:

### c Situation der Bibliothek im alten Gebäude vor der Realisierung des neuen Projekts

- 11 Gesamtfläche:
- 12 Anzahl der Nutzerarbeitsplätze:
- 13 Gesamtkapazität Stellfläche:
- 14 davon in Freihand-Aufstellung:
- 15 davon in geschlossenen Magazinen:

- 16 Anzahl der Beschäftigten in der Bibliothek (Vollzeit-Äquivalente):
- 17 Öffnungszeiten im alten Gebäude:

## B Das neue Gebäude

### a Architekt(en)

- 18 Büro:
- 19 Projektleitung:
- 20 Art des Projektes:

### b Ziele des Bauprojektes

- 21 Kurze Beschreibung der Hauptziele und Absichten des Projektes:

### c Spezielle Merkmale

- 22 Ort:
- 23 Architektur:

## C Technische Information

### a Gesamtfläche

- 24 Netto-Grundfläche (inkl. Korridore, Treppen, Aufzüge, technische Räume etc.):

Unterteilt in:

- 25 Benutzungsbereiche (Auskunftsräume, Lesesäle, Buch- und Zeitschriftenbestände, Ausleihe, Information, etc.):

Spezielle Räume für:

- 26 Audiovisuelle Medien:
- 27 Computer:
- 28 Sondersammlungen:
- 29 Schulungs- und Seminarraum (-räume) (auch für Gruppenarbeit):

Räume für besondere Aktivitäten:

- 30 Ausstellungsraum:
- 31 Vortragssaal:



- 32 Cafeteria:
- 33 Räume für Verwaltung und Personal:
- 34 Geschlossene Magazinräume:
- 35 Verkehrsflächen (Flure, Treppen, Aufzüge, Sanitärräume und Räume für die Betriebs- und Haustechnik, etc):
- 36 Weitere Angaben (Informationen):
- 37 Anzahl der Benutzerarbeitsplätze (gesamt):  
Unterteilt in
- 38 Anzahl audiovisueller Arbeitsplätze:
- 39 Anzahl der Computer-Arbeitsplätze:
- 40 Anzahl von Plätzen in Schulungs- und Seminarräumen:
- 41 Anzahl übriger Benutzerarbeitsplätze:

**b Gesamtkapazität der Stellfläche für Regale**

- 42 Bücher und Zeitschriften (gesamt):  
Enthält:
- 43 Freihand-Aufstellung:
- 44 geschlossene Magazine:
- 45 Kompaktregale:
- 46 Audiovisuelle Materialien:
- 47 Andere:
- 48 Anzahl des Personals, das für den Service im neuen Gebäude benötigt wird (Vollzeit-Äquivalente):

**c Mechanische Eigenschaften (Haus- und Betriebstechnik) (Haus- und Betriebstechnik)**

- 49 Lüftung/Klimatisierung:
- 50 Heizung:
- 51 Beleuchtung:
- 52 Akustik:
- 53 Aufzüge, Rolltreppen:

- 54 Buchtransportsystem:
- 55 (Buch-)Diebstahlsicherung:
- 56 Gebäudeautomatisierung:
- 57 Typ der IT-Infrastruktur (Netzwerktyp und Kapazität) :
- 58 Andere:

## **D Zeitplan des Bauprozesses des Bauprozesses**

- 59 Erste Planung, Aufstellung des Raumprogramms:
- 60 Wettbewerb:
- 61 Projektzeitraum
- 62 Baubeginn:
- 63 Fertigstellung
- 64 Einrichtung und Umzug der Sammlung:
- 65 Eröffnung des neuen Gebäudes für die Öffentlichkeit:

## **E Kosten (incl. Steuern) (incl. Steuern)**

- 66 Ausgaben für das Grundstück :
- 67 Ausgaben für das Gebäude:
- 68 Ausgaben für Mobiliar und Ausstattung:
- 69 Ausgaben für Honorare:
- 70 Gesamtausgaben für das Bauprojekt:
- 71 Jährliche laufende Betriebskosten (Haustechnik):
- 72 Finanzierung:

## **F Publikationen und Auszeichnungen**

# Questionario: descrizione nuovi edifici di biblioteche universitarie e di ricerca in Europa

## A Informazioni generali sulla biblioteca

### a Nome e indirizzo

- 1 Tipo di biblioteca:
- 2 Nome: / Nome dell'istituzione madre
- 3 Indirizzo:
- 4 Telefono, fax e indirizzo di posta elettronica:
- 5 Nome del direttore della biblioteca:
- 6 Persona da contattare, indirizzo di posta elettronica, telefono:

### b Utenza

- 7 Numero attuale di utenti registrati:
- 8 Numero di studenti a tempo pieno:
- 9 Numero di studenti a tempo parziale:
- 10 Numero di personale dell'istituzione:

### c Caratteristiche della biblioteca (prima del nuovo progetto)

- 11 Superficie totale (in m<sup>2</sup>):
- 12 Numero di posti di lettura:
- 13 Capacità di stivaggio (espressa in metri lineari o numero di libri e periodici):
- 14 a scaffale aperto:
- 15 a magazzino:

- 16 Unità di personale (espresso in full time equivalent):
- 17 Orario di apertura (espresso in ore di apertura settimanali e in numero di giorni per anno):

## **B Il nuovo edificio: obiettivi e caratteristiche**

### **a Architetto(i)**

- 18 Studio:
- 19 Architetto progettista:
- 20 Tipo di progetto

### **b Obiettivi del nuovo edificio**

- 21 Breve descrizione dei principali obiettivi del progetto:

### **c Caratteristiche**

- 22 Localizzazione:
- 23 Architettura:

## **C Informazioni tecniche sul nuovo edificio**

### **a Superficie**

- 24 Superficie totale (inclusi corridoi, scale, ascensori, locali tecnici, ecc.):

Diviso in

- 25 Aree ad accesso libero (reference, sale di lettura, sale di consultazione libri e periodici, punti informativi e di prestito, ecc.):

Sale ad uso speciale per:

- 26 Audiovisivi:
- 27 Postazioni informatiche:
- 28 Collezioni particolari:
- 29 Sale seminariali:

Attività speciali:

- 30 Spazi espositivi:
- 31 Sala conferenze:

- 32 Caffetteria:
- 33 Spazi dedicati al personale:
- 34 Magazzini chiusi al pubblico :
- 35 Collegamenti verticali e orizzontali (corridoi, scale, ascensori), servizi igienici, locali tecnici:
- 36 Altri dati (es. numero di piani, numero di piani accessibili al pubblico, ecc.):
- 37 Numero di posti di lettura (totale):  
Diviso in
- 38 Postazioni per gli audiovisivi:
- 39 Postazioni informatiche:
- 40 Sala/e seminari:
- 41 Postazioni di lavoro:

#### **b Capacità massima di stoccaggio**

- 42 Libri e periodici:
- 43 a scaffale aperto:
- 44 a magazzino:
- 45 in scaffali compatti:
- 46 Materiale audiovisivo:
- 47 Altro:
- 48 Personale necessario per il funzionamento della nuova biblioteca (espresso in full time equivalent):

#### **c Caratteristiche tecniche**

- 49 Sistema di climatizzazione:
- 50 Sistema di riscaldamento:
- 51 Illuminazione:
- 52 Acustica:
- 53 Ascensori, montacarichi, scale:
- 54 Sistemi di trasporto dei libri:

- 55 Sistema Antitaccheggio:
- 56 Gestione computerizzata dell'edificio:
- 57 Tipo di infrastruttura IT (capacità di cablaggio):
- 58 Altro:

## **D Tempi di realizzazione del nuovo edificio**

- 59 Elaborazione del programma:
- 60 Concorso per la progettazione:
- 61 Durata della progettazione:
- 62 Apertura del cantiere:
- 63 Chiusura del cantiere:
- 64 Allestimento arredi e trasloco delle collezioni:
- 65 Data di apertura del nuovo edificio al pubblico:

## **E Costi**

- 66 Terreno:
- 67 Edificio:
- 68 Arredi e attrezzature:
- 69 Onorario:
- 70 Totale:
- 71 Costi operativi:
- 72 Finanziamento (risorse del finanziamento, i.e. private, pubbliche)

## **F Pubblicazioni e premi**

# Cuestionario: descripción de bibliotecas de investigación y universitarias de reciente construcción en Europa

## A Información general sobre su biblioteca

### a Nombre y dirección

- 1 Tipo de:
- 2 Nombre de la biblioteca / Nombre de institución matriz:
- 3 Dirección:
- 4 Teléfono, fax y dirección electrónica:
- 5 Nombre del director de la biblioteca:
- 6 Persona de contacto, dirección de correo electrónico, teléfono:

### b Usuarios

- 7 Número de usuarios actuales, número de usuarios registrados:
- 8 Número de estudiantes a tiempo completo:
- 9 Número de estudiantes a tiempo parcial:
- 10 Número de empleados de la institución:

### c Edificio(s) anterior(es)/original(es)

- 11 Superficie total:
- 12 Número de asientos para los lectores:
- 13 Capacidad total de almacenaje:
- 14 en estanterías de acceso libre:

- 15 en estanterías de acceso restringido:
- 16 Personal de la biblioteca (número equivalente a personas con jornada completa):
- 17 Horarios de apertura al público:

## **B Características del nuevo edificio**

### **a Arquitecto(s)**

- 18 Despacho:
- 19 Arquitecto del proyecto:
- 20 Tipo de proyecto:

### **b Finalidad del nuevo edificio**

- 21 Breve descripción de los principales objetivos y fines del proyecto:

### **c Características especiales**

- 22 Solar:
- 23 Arquitectura:

## **C Información técnica**

### **a Superficie**

- 24 Superficie total (incluyendo pasillos, escaleras, elevadores, salas de máquinas, etc.; metros o pies cuadrados):

Dividido entre

- 25 Servicios de acceso libre (salas de índices, salas de lectura, salas de publicaciones, información, etc.):

Salas especiales para:

- 26 Audiovisuales:
- 27 Ordenadores:
- 28 Colecciones especiales:
- 29 Sala(s) de seminarios: estudio en grupo, aulas de formación

Actividades especiales:



- 30 Espacio para exposiciones:
  - 31 Sala de conferencias:
  - 32 Sala de ocio:
  - 33 Zonas de personal y de administración:
  - 34 Estanterías de acceso restringido:
  - 35 Zonas de circulación (pasillos, escaleras, elevadores), aseos, salas de máquinas, etc.:
  - 36 Más información:
  - 37 Número de asientos para lectores (Total):  
Dividido entre
  - 38 Audiovisuales:
  - 39 Ordenadores:
  - 40 Sala(s) de seminarios:
  - 41 Resto:
- b Capacidad potencial de almacenaje**
- 42 Libros y publicaciones (en total):  
Incluyendo:
  - 43 Estanterías de acceso libre:
  - 44 Estanterías de acceso restringido:
  - 45 Estanterías compactas:
  - 46 Materiales audiovisuales:
  - 47 Otros:
  - 48 Número de empleados requeridos para el funcionamiento de la nueva biblioteca (equivalente a personas con jornada completa):
- c Características técnicas**
- 49 Ventilación/Aire acondicionado:
  - 50 Calefacción:
  - 51 Iluminación:
  - 52 Megafonía:

- 53 Elevadores, montacargas, escaleras:
- 54 Sistema de transporte de libros:
- 55 Sistema antirrobo:
- 56 Control informatizado del edificio:
- 57 Tipo de cableado informático:
- 58 Otros:

## **D Calendario del proceso de edificación**

- 59 Planteamiento, borradores iniciales:
- 60 Concurso arquitectónico:
- 61 Tiempo para el proyecto:
- 62 Fecha de inicio de las obras:
- 63 Finalización de las obras:
- 64 Equipamiento y traslado de la colección:
- 65 Fecha de apertura del nuevo edificio para el público:

## **E Costes**

- 66 Solar:
- 67 Edificación:
- 68 Equipamientos y mobiliario:
- 69 Tasas:
- 70 Total:
- 71 Costes de funcionamiento:
- 72 Financiación:

## **F Publicaciones y premios**